



# DUNIFORM®

Smarter in-house packaging  
Full assortment 2025

# DUNIFORM®

For over 40 years, the Duniform® concept has set the standard for simple, smart and hygiene in-house packaging. Over that time, it has helped to drive success for many leading hotels, restaurants, MSR companies, caterers, and retailers.

Back in 1977 the concept was much less comprehensive. Since then, built on the idea that good food deserves good packaging, it has consistently grown in popularity and scale. Today, while it has expanded to match our customers' needs, it still offers the same core benefits:

- 1. One-stop-shop convenience:** Get everything from machines to transport solutions from one supplier – and it's all designed to work together.
- 2. Simplicity in design:** Streamline preparation, transport and service – and ensure a rewarding customer experience.
- 3. Grows with your business:** Design a Duniform® solution around the needs of your business, whatever its size, which you can tailor to changing needs.
- 4. Confidence-inspiring quality:** Stand out with Duniform® machines, trays, films which combine top-quality materials and design excellence.
- 5. Top-quality service:** Relax with excellent local support for the lifetime of your solution.
- 6. Value creation opportunities:** Offer products that you couldn't before, stimulate impulse purchases and extend the shelf-life of your food.
- 7. Optimal presentation and food safety:** Maximise hygiene and present your culinary creations in their best possible light.

## 40 YEARS OF SUCCESS

Duniform started life in 1977 to meet the need for a smart in-house packaging concept. Paper trays and paper lids were used first, along with the partly wooden DF83 and DF84 machines. Since then, many innovations have followed. These include easy-to-open sealable trays, clear films that show food at its best, fully automatic motorised machines, and MAP functionalities.



# GROWS WITH YOUR BUSINESS

All about simplicity and versatility, Duniform® evolves to match your needs, as and when they change. For example, if the number of your customers grows, you can easily switch from a manual to semi-automatic machine. You also get top-quality local support, which even includes training, so you can maximise the value of your investment.

**“Everything in the Duniform® concept is designed to work together. So, compared to using separate suppliers, it makes life much easier.”**





# STANDARD SIZES, STANDOUT STYLE

Duniform® trays come in elegant 'straight to the table' formats to suit all types of frozen, chilled and warm food. They also offer a wide variety of GN compartment sizes, giving you full control over volumes, costs and end-user experience. The icing on the cake? They are designed for convenient stackability and transport too.





# MATERIALS THAT MAKE THE RIGHT IMPRESSION

Different materials suit different foods. Mindful of this, we offer a full selection for hot, cold and microwaveable cuisine, selection of renewable materials, including wood fiber, cardboard, and bioplastics and recycled materials, particularly recycled PET (RPET). All top-quality, these accentuate the appeal of food and deliver excellent performance. But which one is best for your business? Our team is standing by to provide guidance.

## OUR MATERIALS

1. Fibre
2. Cardboard
3. PP
4. APET
5. Bioplastic
6. RPET/CPET (recycled)



Please review the materials guide for all the key information on the next page.

# MATERIALS GUIDE

Different materials suit different needs. This guide will help you to make the right choice for your business\*.

| SYMBOL  | NAME            | TEMPERATURE*    | DESCRIPTION OF MATERIAL  | RECYCLING/DISPOSAL   |
|---|-----------------|-----------------|--|--|
|    | Woodfibre       | -4°C to +100°C  | Sugar cane fiber by-product                                    | Compostable EN13432 or recycle as Carton/Paper                                 |
|    | Bioplastic      | -20°C to +120°C | Bioplastic from sugar and natural waxes                        | Recycle as Plastics  |
|    | -               | -4°C to +100°C  | Bioplastic from plant starch, crystalline polylactic acid      | Compostable EN13432 (cutlery ASTM D6400 and ASTM D6868) or recycle as Plastics |
|    | -               | 0°C to +90°C    | Mix of locally harvested grass and forest fiber.               | Recycle as Paper Packaging   |
|    | -               | -4°C to +40°C   | Virgin plastic, polybutylene succinate                         | Compostable EN13432 or recycle as Plastics                                     |
|    | -               | -4°C to +40°C   | Bioplastic from plant starch, polylactic acid                  | Compostable EN13432 or recycle as Plastics                                     |
|  | RPET            | -40°C to +70°C  | 80-100% recycled PET   | Recycle as Plastics  |
|  | -               | -40°C to +250°C | Aluminium  | Recycle as Metal   |
|  | APET            | -40°C to +70°C  | Virgin plastic, amorphous poly(ethylene terephthalate)         | Recycle as Plastics  |
|  | Cardboard       | -20°C to +100°C | Cardboard from forest fiber                                    | Recycle as Paper/Carton  |
|  | CPET            | -40°C to +220°C | 80-100% recycled PET, crystalline poly(ethylene terephthalate) | Recycle as Plastics  |
|  | -               | -4°C to +100°C  | Virgin plastic, polyethene                                     | Recycle as Plastics  |
|  | -               | -4°C to +100°C  | Virgin plastic, polyethene                                     | Recycle as Plastics  |
|  | Mineral plastic | -20°C to +120°C | Virgin plastic, polypropene with chalk or talcum               | Recycle as Plastics  |
|  | -               | -20°C to +100°C | Paper from forest fiber  | Recycle as Paper/Carton  |
|  | PP              | -20°C to +120°C | Virgin plastic, polypropene                                    | Recycle as Plastics  |
|  | PS/EPS          | -4°C to +100°C  | Virgin plastic, polystyrene / expanded polystyrene             | Recycle as Plastics  |

\*Check specific temperature and time recommendation in catalogue



# SYMBOLS GUIDE

The products in our range have a variety of quality and environmental labels. Here you can find out what they mean.



Leak resistant.



Oven safe.



Microwave safe.



Can be sealed by a Duniform® machine.



Lid or sealing film does not mist up.



Can be customised with a logo, design or message.



Hinged lid tears off easily.



Excellent insulation properties.



Designed for optimal stackability.

# LABELS THAT MATTER

When browsing our assortment, keep an eye out for different environmental and quality certifications. Other certifications also shed light on how to dispose the product in a responsible way after use.



**OK COMPOST HOME**  
The OK Compost HOME label and the DIN-Geprüft Home Compostable label indicate that the product can be composted at home, for instance by putting it on the compost heap in your garden.



**OK COMPOST INDUSTRIAL**  
The OK Compost INDUSTRIAL label and the Seedling label indicate that the product is suitable for industrial composting and meets the stringent requirements of the European standard EN 13432.



**THE FOREST STEWARDSHIP COUNCIL™ (FSC™)**  
Ensures that the product is made of wood from forests managed in an environmentally appropriate, socially beneficial and economically viable manner.

# FILMS THAT PROMOTE YOUR BUSINESS

If you want to make your food look delicious, encourage impulse purchases and ensure a leak-free, secure fit, Duniform® films tick the boxes. You can choose between Biobased, PP, PET and Universal films. These are crystal-clear and can be specified to prevent fogging. Even better, we can personalise them for your business - making your packaging a powerful promotional tool.



**"In today's globalised world, there is a growing demand for individualisation. Customising films offers a simple, cost-effective way to meet this need - and build your brand. Our customisation team can organise this for you."**



# FIRST-CLASS TRANSPORT SOLUTIONS

From your customers' perspective, your food is only as good as the condition it arrives in. With the Duniform® transport solutions - thermo-bags and boxes, temperature control equipment and trolleys - you can make sure it arrives in tip-top condition. What's more, you can work smarter too by simplifying preparation, loading and delivery.



**"Our transport solutions let you pack, stack and deliver with total efficiency. They also help to ensure that your dishes arrive looking as tasty as when they left the kitchen."**



# END-TO-END SERVICE SUPPORT AND TRAINING

Choose Duniform® and you get top-quality support for the lifetime of your solution. This enables you to consistently maximise its value and receive speedy, local technical assistance. Right behind you every step of the way, we even offer staff training for the more sophisticated machines.



**"We are dedicated to providing service that's a cut above. For instance, our service agents always have a stock of spare parts available to provide the speediest possible service."**

The Duniform® one-stop-shop concept has set the standard for simple, smart in-house packaging. Over time, it has helped to drive success for many leading hotels, restaurants, MSR companies, caterers, and retailers.

**Unlike off-the-shelf solutions**

Different to many alternatives, all Duniform® products are designed to work together. That means you get optimal convenience and your customers get a consistently great experience. What's more there are no complicated ordering hassles.

**Market- leading materials**

The Duniform® concept includes many innovative, such as fibre based, bioplastic and recycled materials. These not only offer top-level performance and practicality; they also send an attractive message about your business to your customers.

**Tailored to your business needs**

Another big advantage of the Duniform concept is the way it matches - and grows with - your business. With such a wide choice of machines, materials and trays available you can always get exactly the right solution for your needs.

**A flexible finishing touch**

The sealing films for Duniform® can be customised for an added personal touch. Now we even offer profile printed stickers & sleeves that enable you to promote your brand on-the-go.



**A WORD FROM OUR CLIENTS**



"The design is important to me and my customers. So are sustainable materials and the smart filling functionality."

- Mathias Piplad,  
Meatballs for the People



"Duniform® trays have a quality look and feel. Our guests definitely appreciate them."

- Manh Phan Hien,  
owner of Zen Thai



"Duniform® bioplastic trays are a very good choice for us. They allow us to increase the number of sustainable products we use."

- Magnus Lingvörn,  
Head chef at the Mathildenberg kitchen





## TAKE AWAY FIBRE & SIDE DISH FIBRE

- European sourced wood fibre
- Industrially compostable
- Sealable with biobased sealing film

Material: PE/EVOH coated bagasse -20°C to +100°C, hot fill & microwarmable.  
Temp (Time): +100°C (15 min), +70°C (4h), Chilled <16 days, MW<5 min



| No | Article       | Description         | Comp | Colour  | Cassette DF10/20* | Size LxWxH (mm) | Vol (ml)    | Qty/Cart. |               |                     |   |         |   |            |   |       |
|----|---------------|---------------------|------|---------|-------------------|-----------------|-------------|-----------|---------------|---------------------|---|---------|---|------------|---|-------|
| 1  | <b>205973</b> | Take-Away Fibre     | 1    | Natural | 150020            | 250x159x43      | 1120        | 1x225     |               |                     |   |         |   |            |   |       |
| 2  | <b>205974</b> | Take-Away Fibre     | 2    | Natural | 150021            | 250x159x45      | 625/360     | 1x225     |               |                     |   |         |   |            |   |       |
| 3  | <b>205975</b> | Take-Away Fibre     | 3    | Natural | 150022            | 250x159x48      | 540/340/180 | 1x225     |               |                     |   |         |   |            |   |       |
| 4  | <b>205979</b> | Side Dish Fibre     | 1    | Natural | 140152 (2 cav.)   | 140x116x37      | 330         | 1x340     |               |                     |   |         |   |            |   |       |
| 5  | <b>205980</b> | Side Dish Fibre     | 1    | Natural | 140152 (2 cav.)   | 140x116x55      | 1x320       | 6         | <b>205976</b> | Take-Away Fibre Lid | - | Natural | - | 256x165x19 | - | 1x225 |
| 6  | <b>205976</b> | Take-Away Fibre Lid | -    | Natural | -                 | 256x165x19      | -           | 1x225     |               |                     |   |         |   |            |   |       |

- \* No. 1 DF15/DF25 cassette, 165911 (2 cav.), also available
- \* No. 2 DF15/DF25 cassette, 182975 (2 cav.), also available
- \* No. 3 DF15/DF25 cassette, 173050 (2 cav.), also available
- \* No. 4,5 DF15/DF25 cassette, 152411 (4 cav.), also available





## HMR FIBRE

- Made from renewable material
- No added PFAS
- Water & grease resistant
- MAP applicable with PE/EVOH coating

Material: PE/EVOH coated bagasse -20°C to +100°C, hot fill & microwarmable.  
Temp (Time): +100°C (15 min), +70°C (4h), Chilled <16 days, MW<5 min



| No | Article       | Description       | Comp | Colour  | Cassette DF10/20* | Size LxWxH (mm) | Vol (ml) | Qty/Cart. |
|----|---------------|-------------------|------|---------|-------------------|-----------------|----------|-----------|
| 1  | <b>200912</b> | HRM Fibre/PE Tray | 1    | Natural | 140156            | 215x148x40      | 820      | 320       |
| 2  | <b>200913</b> | HRM Fibre/PE Tray | 1    | Natural | 140156            | 215x148x50      | 1000     | 320       |
| 3  | <b>205977</b> | HRM Fibre/PE Tray | 1    | Natural | 140156            | 215x148x70      | 1300     | 300       |
| 4  | <b>205978</b> | HRM Fibre/PE Tray | 2    | Natural | 140155            | 215x148x50      | 400/500  | 320       |
| 5  | <b>199198</b> | HMR Fibre Lid     | -    | Natural | -                 | 222x155x21      | -        | 320       |

\* No. 1-3 DF15/DF25 cassette, 152415 (2 cav.), also available

\* No. 4 DF15/DF25 cassette, 172698 (2 cav.), also available

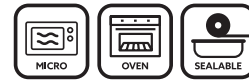


**WORLDSTAR  
WINNER 2024**

## MENU FIBRE TRAYS

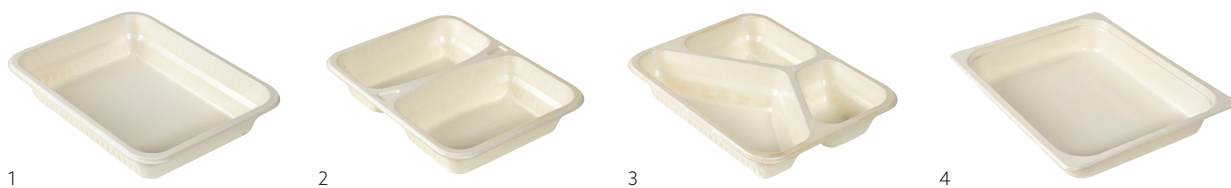
- European sourced wood fibre
- Industrially compostable
- Sealable with biobased sealing film

Material: PBS/PLA coated wood fibre -20°C to +150°C  
 Temp (Time): 150°C<45min,  
 Micro (900W)<3min, -20° (unlimited)



| No | Article       | Description       | Comp | Colour  | Cassette DF10/20* | Size LxWxH (mm) | Vol (ml)    | Qty/Cart. |
|----|---------------|-------------------|------|---------|-------------------|-----------------|-------------|-----------|
| 1  | <b>209249</b> | Menu Fibre Tray   | 1    | Natural | 140162            | 227x178x45      | 1300        | 1x180     |
| 2  | <b>209257</b> | Menu Fibre Tray   | 2    | Natural | 192176            | 227x178x45      | 640/465     | 1x174     |
| 3  | <b>209258</b> | Menu Fibre Tray   | 3    | Natural | 192177            | 227x178x45      | 190/250/500 | 1x168     |
| 4  | <b>196584</b> | 1/2 GN Fibre Tray | 1    | Natural | 141550 (DF15/25)  | 325x265x52      | 3020        | 1x140     |

\*No. 1 DF15/25 cassette, 153432 (2 cav.) also available  
 \*No. 2 DF15/25 cassette, 198098 (2 cav.) also available  
 \*No. 3 DF15/25 cassette, 198099 (2 cav.) also available



## RPET LID FOR MENU FIBRE TRAYS

- Made from 85% recycled material
- Excellent stackability

Material: RPET -40°C to +70°C



| No | Article       | Description              | Colour      | Size LxWxH (mm) | Qty/Cart. |
|----|---------------|--------------------------|-------------|-----------------|-----------|
| 1  | <b>199874</b> | Lid for Menu Fibre Trays | Transparent | 234x186x23      | 1x220     |



## SEALING FILM FOR FIBRE TRAYS

- Compostable
- Biobased

Cooking temp. max: 220°C (60min)



| No | Article       | Description      | Sealing temp. | Thickness (µm) | Size (mm x m) | Qty/Cart. |
|----|---------------|------------------|---------------|----------------|---------------|-----------|
| 1  | <b>196585</b> | Bio sealing film | 110-140°C     | 30             | 185x400       | 1x1       |
| 2  | <b>196586</b> | Bio sealing film | 110-140°C     | 30             | 272x400       | 1x1       |











## FORUM CARDBOARD/PE TRAYS

- Made from renewable FSC™ certified material
- 85% less plastic
- Made in Europe
- Easy recycling
- Figure cutting and MAP available on larger machines



Material: Cardboard/PE -20°C to +100°C, hot fill & microwarmable.  
Temp (Time): +100°C (15 min), +70°C (4h), Chilled <16 days, MW<5 min



| No | Article       | Description | Colour  | Cassette DF10/20* | Size LxWxH (mm) | Vol (ml) | Qty/Cart. |
|----|---------------|-------------|---------|-------------------|-----------------|----------|-----------|
| 1  | <b>197373</b> | Forum Tray  | Printed | 197433            | 187x137x50      | 785      | 1x420     |
| 2  | <b>192166</b> | Forum Tray  | Printed | 192162            | 178x165x45      | 918      | 1x270     |
| 3  | <b>192167</b> | Forum Tray  | Printed | 192162            | 178x165x59      | 1114     | 1x330     |
| 4  | <b>194836</b> | Forum Tray  | Printed | 140162            | 227x178x40      | 1200     | 1x270     |

\*No. 2-3 DF15/DF25 cassette, 194470 (2 cav.), also available

\*No. 4 DF15/25 cassette, 153432 (2 cav.), also available



## CARDBOARD/PET MENU TRAYS

- High temperature resistance
- Combine with PET or universal sealing film

Material: Cardboard/PET -20°C to +220°C  
Temp (Time): +220°C (1h), +70°C (2h), -20°C (unlimited)



| No. | Article       | Description    | Colour | Cassette DF10/20      | Size LxWxH (mm) | Vol (ml) | Qty/Cart. |
|-----|---------------|----------------|--------|-----------------------|-----------------|----------|-----------|
| 1   | <b>202289</b> | Cardboard Tray | White  | 140162*               | 227x177x40      | 1000     | 1x540     |
| 2   | <b>202290</b> | Cardboard Tray | White  | 140163/187026 (vert.) | 186x136x35      | 550      | 1x480     |
| 3   | <b>202291</b> | Cardboard Tray | White  | 140163/187026 (vert.) | 186x136x45      | 720      | 1x400     |

\*No. 1 DF 15/DF25 cassette, 153432 (2 cav.) also available





# RONDA

- Certified industrially compostable
- Made from renewable FSC™ material
- Biobased lamination
- Water & grease resistant
- Sealable with biobased or universal sealing film



Material: Paperboard/PLA max +100°C

| No | Article       | Decription | Colour | Size LxWxH (mm) | Volume (ml) | Qty/Cart. | Cassette                                |
|----|---------------|------------|--------|-----------------|-------------|-----------|---|
| 1  | <b>196018</b> | Bowl Short | Brown  | 90x90x62        | 240         | 16x25     | 191377 DF5, 209674 DF10/20 (2 cav.)     |
| 2  | <b>196019</b> | Bowl Short | White  | 90x90x62        | 240         | 16x25     | 191377 DF5, 209674 DF10/20 (2 cav.)     |
| 3  | <b>196020</b> | Bowl Short | Brown  | 90x90x84        | 360         | 16x25     | 191377 DF5, 209674 DF10/20 (2 cav.)     |
| 4  | <b>196021</b> | Bowl Short | White  | 90x90x84        | 360         | 16x25     | 191377 DF5, 209674 DF10/20 (2 cav.)     |
| 5  | <b>196010</b> | Bowl Wide  | Brown  | 150x150x45      | 500         | 5x50      | 209670 DF10/20, 209671 DF15/25 (2 cav.) |
| 6  | <b>196011</b> | Bowl Wide  | Brown  | 150x150x60      | 700         | 5x50      | 209670 DF10/20, 209671 DF15/25 (2 cav.) |
| 7  | <b>197179</b> | Bowl Wide  | White  | 150x150x60      | 700         | 5x50      | 209670 DF10/20, 209671 DF15/25 (2 cav.) |
| 8  | <b>196013</b> | Bowl Wide+ | Brown  | 184x184x49      | 900         | 6x50      | 209672 DF15/25                          |
| 9  | <b>196014</b> | Bowl Wide+ | Brown  | 184x184x66      | 1300        | 12x25     | 209672 DF15/25                          |
| 10 | <b>197181</b> | Bowl Wide+ | White  | 184x184x66      | 1300        | 12x25     | 209672 DF15/25                          |
| 11 | <b>197183</b> | Bowl Slim  | Brown  | 117x117x183     | 350         | 15x35     | 209673 DF10/20 (2 cav.)                 |
| 12 | <b>197184</b> | Bowl Slim  | White  | 117x117x52      | 350         | 15x35     | 209673 DF10/20 (2 cav.)                 |
| 13 | <b>197185</b> | Bowl Slim  | Brown  | 117x117x74      | 550         | 15x35     | 209673 DF10/20 (2 cav.)                 |
| 14 | <b>197186</b> | Bowl Slim  | White  | 117x117x74      | 550         | 15x35     | 209673 DF10/20 (2 cav.)                 |





## BRICK

- Certified industrially compostable
- Made from renewable FSC™ material
- Biobased lamination
- Water & grease resistant
- Sealable with biobased or universal sealing film



Material: Paperboard/PLA max +100°C

| No | Article | Description      | Comp | Color | Cassette DF10/20 | Size LxWxH | Vol (ml) | Qty/Cart. |
|----|---------|------------------|------|-------|------------------|------------|----------|-----------|
| 1  | 199178  | Brick box Mini   | 1    | Kraft | 201434           | 108x80x33  | 150      | 50x12     |
| 2  | 199179  | Brick box Mini   | 1    | Kraft | 201434           | 108x80x50  | 250      | 60x10     |
| 3  | 199180  | Brick box Medium | 1    | Kraft | 201435           | 171x120x43 | 500      | 50x6      |
| 4  | 199181  | Brick box Medium | 1    | Kraft | 201435           | 171x120x57 | 750      | 50x6      |
| 5  | 204889  | Brick box Medium | 2    | Kraft | 201435           | 171x120x57 | 250/250  | 50x6      |
| 6  | 199182  | Brick box Medium | 1    | Kraft | 201435           | 171x120x77 | 1000     | 50x6      |
| 7  | 199183  | Brick box Large  | 1    | Kraft | 201436           | 168x168x65 | 1200     | 40x4      |



## BRICK LIDS

- Paperboard lids compostable and made from renewable FSC™ certified material
- RPET lids made from 100% recycled material
- Antifog feature on RPET lid to prevent condensation, ensuring perfect clarity
- Excellent stackability



Material: RPET -40°C to +70°C  
Material: Paperboard max +100°C

| No | Article | Description      | Color       | Size LxWxH | Qty/Cart. |
|----|---------|------------------|-------------|------------|-----------|
| 1  | 199185  | Brick lid Mini   | Transparent | 113x86x11  | 50x12     |
| 2  | 199184  | Brick lid Medium | Kraft       | 170x117x17 | 25x6      |
| 3  | 199186  | Brick lid Medium | Transparent | 174x124x15 | 50x6      |
| 4  | 199187  | Brick lid Large  | Transparent | 175x175x15 | 40x8      |





## POLARDELI

- Made from recycled PET
- Tamper-proof closing with Duniform® sealing
- Prolonged shelf life
- Matching stackable lids
- Up to 100% RPET



Material: RPET -40°C to +70°C

| No | Article | Description        | Cassette   | Sealing film | Size LxWxH | Vol (ml) | Qty/Cart. |
|----|---------|--------------------|--|--------------|------------|----------|-----------|
| 1  | 187030  | Polardeli Mini     | 187027 DF10/20 (4 cavities)<br>187037 DF15/25 (6 cavities) | 162800       | 102x80x24  | 100      | 1x720     |
| 2  | 187031  | Polardeli Petit    | 187028 DF10/20 (1 cavities)<br>187036 DF15/25 (2 cavities) | 162800       | 175x115x29 | 300      | 1x780     |
| 3  | 187033  | Polardeli Grand    | 187028 DF10/20 (1 cavities)<br>187036 DF15/25 (2 cavities) | 162800       | 175x115x69 | 750      | 1x450     |
| 4  | 187034  | Polardeli Lid Mini | -  | -            | 108x86x18  | -        | 1x630     |
| 5  | 187035  | Polardeli Lid      | -  | -            | 181x121x18 | -        | 1x625     |



## RPET SANDWICH TRAY

- Made from 85% recycled material
- Fully seal sandwiches to extend shelf life
- Maximise hygiene and appeal of food
- Map applicable with more sophisticated Duniform® machines



Material: RPET max +70°C

| No. | Article | Description   | Comp | Colour      | Material | Cassette   | Size(mm) LxWxH | Vol (ml) | Qty/ Cart. |
|-----|---------|---------------|------|-------------|----------|--|----------------|----------|------------|
| 1   | 201112  | Sandwich Tray | 1    | Transparent | RPET     | 186166 DF10 (2 cav.),<br>186165 DF15/25 (3 cav.) | 181x96x85      | 570      | 1x1000     |



1





## BIOPLASTIC CATER LINE TRAYS

- Made from a renewable resource
- Recyclable
- MAP applicable

Material: Bioplastic -20°C to +120°C.

Temp (Time): +120°C <60min, +100°C <120min, +70°C <240min, +40°C <10days



| No | Article       | Description     | Comp | Colour | Cassette DF10/20* | Size LxWxH (mm) | Volume (ml) | Qty/Cart. |
|----|---------------|-----------------|------|--------|-------------------|-----------------|-------------|-----------|
| 1  | <b>175299</b> | Cater Line Tray | 1    | White  | 140162            | 227x178x40      | 1115        | 1x216     |
| 2  | <b>173718</b> | Cater Line Tray | 1    | White  | 140162            | 227x178x50      | 1345        | 1x216     |
| 3  | <b>173719</b> | Cater Line Tray | 2    | White  | 159176            | 227x178x50      | 645/540     | 1x216     |
| 4  | <b>173720</b> | Cater Line Tray | 3    | White  | 159177            | 227x178x50      | 530/325/235 | 1x216     |

\*No. 1,2 DF15/25 cassette, 153432 (2 cav.) also available

No. 3 DF15/25 cassette, 163449 (2 cav.) also available

No. 4 DF15/25 cassette, 163450 (2 cav.) also available



## BIOPLASTIC TAKE-AWAY TRAYS

- Made from a renewable resource
- Recyclable
- MAP applicable

Material: Bioplastic -20°C to +120°C

Temp (Time): +120°C (1 h), +70°C(4h), +40°C (10 days), -20°C (unlimited)



| No | Article       | Description    | Comp | Colour | Cassette DF10/20* | Size LxWxH (mm) | Vol (ml)    | Qty/Cart. |
|----|---------------|----------------|------|--------|-------------------|-----------------|-------------|-----------|
| 1  | <b>171149</b> | Take-Away Tray | 1    | White  | 150020            | 250x159x43      | 1100        | 1x246     |
| 2  | <b>171150</b> | Take-Away Tray | 2    | White  | 150021            | 250x159x45      | 700/400     | 1x246     |
| 3  | <b>171151</b> | Take-Away Tray | 3    | White  | 150022            | 250x159x48      | 550/350/200 | 1x246     |

\*No. 1 DF15 / DF25 cassette, 165911 (2 cav.) also available.

No. 2 DF15 / DF25 cassette, 182975 (2 cav.) also available.

No. 3 DF15 / DF25 cassette, 173050 (2 cav.) also available.



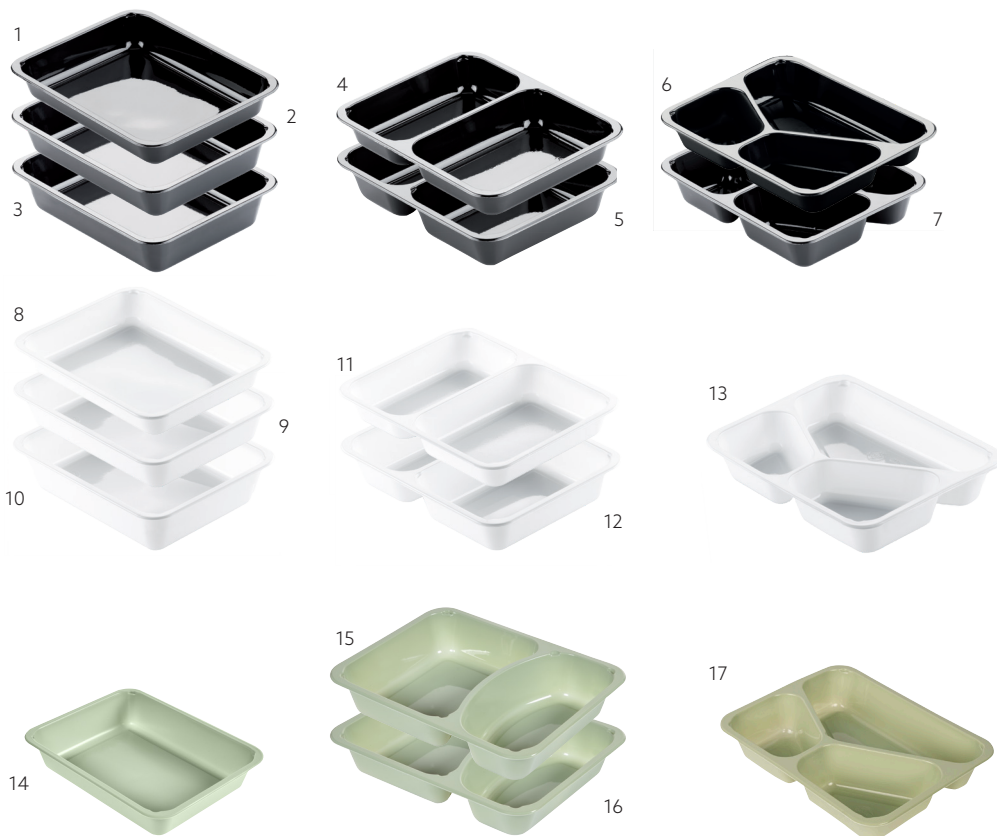






## CPET (RECYCLED) MENU TRAYS

- 100% recycled material



Material: CPET -40°C to +220°C.  
Temp (Time): +220°C (2h), +40°C (10days), -40°C (unlimited)



| No | Article       | Description | Comp | Colour | Cassette                                | Size LxWxH (mm) | Volume (ml) | Qty/<br>Cart. |
|----|---------------|-------------|------|--------|---|-----------------|-------------|---------------|
| 1  | <b>115495</b> | Menu Tray   | 1    | Black  | 140162 DF10/20, 153432 DF15/25 (2 cav.) | 225x175x34      | 960         | 1x300         |
| 2  | <b>122018</b> | Menu Tray   | 1    | Black  | 140162 DF10/20, 153432 DF15/25 (2 cav.) | 225x175x43      | 1200        | 1x300         |
| 3  | <b>153414</b> | Menu Tray   | 1    | Black  | 140162 DF10/20, 153432 DF15/25 (2 cav.) | 225x175x54      | 1500        | 1x270         |
| 4  | <b>151305</b> | Menu Tray   | 2    | Black  | 140160 DF10/20, 153433 DF15/25 (2 cav.) | 225x175x35      | 515/370     | 1x250         |
| 5  | <b>115505</b> | Menu Tray   | 2    | Black  | 140160 DF10/20, 153433 DF15/25 (2 cav.) | 225x175x43      | 655/455     | 1x300         |
| 6  | <b>151307</b> | Menu Tray   | 3    | Black  | 140158 DF10/20, 152440 DF15/25 (2 cav.) | 225x175x34      | 430/225/165 | 1x250         |
| 7  | <b>115506</b> | Menu Tray   | 3    | Black  | 140158 DF10/20, 152440 DF15/25 (2 cav.) | 225x175x43      | 525/275/205 | 1x300         |
| 8  | <b>115494</b> | Menu Tray   | 1    | White  | 140162 DF10/20, 153432 DF15/25 (2 cav.) | 225x175x34      | 960         | 1x300         |
| 9  | <b>115503</b> | Menu Tray   | 1    | White  | 140162 DF10/20, 153432 DF15/25 (2 cav.) | 225x175x43      | 1200        | 1x300         |
| 10 | <b>153422</b> | Menu Tray   | 1    | White  | 140162 DF10/20, 153432 DF15/25 (2 cav.) | 225x175x54      | 1500        | 1x270         |
| 11 | <b>151306</b> | Menu Tray   | 2    | White  | 140160 DF10/20, 153433 DF15/25 (2 cav.) | 225x175x35      | 515/370     | 1x250         |
| 12 | <b>115504</b> | Menu Tray   | 2    | White  | 140160 DF10/20, 153433 DF15/25 (2 cav.) | 225x175x43      | 655/455     | 1x300         |
| 13 | <b>132346</b> | Menu Tray   | 3    | White  | 140158 DF10/20, 152440 DF15/25 (2 cav.) | 225x175x43      | 525/275/205 | 1x300         |
| 14 | <b>203849</b> | Menu Tray   | 1    | Green  | 140162 DF10/20, 153432 DF15/25 (2 cav.) | 225x175x43      | 1200        | 1x300         |
| 15 | <b>206689</b> | Menu Tray   | 2    | Green  | 140162 DF10/20, 153432 DF15/25 (2 cav.) | 225x175x34      | 532/347     | 1x300         |
| 16 | <b>205249</b> | Menu Tray   | 2    | Green  | 140162 DF10/20, 153432 DF15/25 (2 cav.) | 225x175x43      | 656/424     | 1x300         |
| 17 | <b>203850</b> | Menu Tray   | 3    | Green  | 140158 DF10/20, 152440 DF15/25 (2 cav.) | 225x175x43      | 525/275/205 | 1x300         |

## PP LID FOR CPET MENU TRAYS



Material: PP -20°C to +100°C.  
Temp (Time): +100°C <120min, +70°C <120min, +40°C <10days

| No | Article       | Description             | Colour      | Size LxWxH (mm) | Qty/<br>Cart. |
|----|---------------|-------------------------|-------------|-----------------|---------------|
| 1  | <b>196780</b> | Lid for CPET Menu Trays | Transparent | 232x182x17      | 1x210         |



## CPET (RECYCLED) SMALL PORTION TRAYS

• 100% recycled material in trays

Material: CPET -40°C to +220°C  
Temp (Time): +220°C (2h), +40°C (10days), -40°C (unlimited)



| No. | Article       | Description        | Colour      | Cassette DF10/20     | Size LxWxH (mm) | Vol (ml) | Qty/Cart. |
|-----|---------------|--------------------|-------------|----------------------|-----------------|----------|-----------|
| 1   | <b>157356</b> | Small Portion Tray | Black       | 182540 (2 cav.)      | 160x103x35      | 370      | 1x750     |
| 2   | <b>115483</b> | Small Portion Tray | Black       | 140249 (2 cav.)      | 171x127x35      | 510      | 1x900     |
| 3   | <b>115482</b> | Small Portion Tray | White       | 140249 (2 cav.)      | 171x127x35      | 510      | 1x900     |
| 4   | <b>204030</b> | Small Portion Tray | Green       | 140249 (2 cav.)      | 171x127x35      | 510      | 1x900     |
| 5   | <b>148217</b> | Small Portion Tray | Black       | 140249 (2 cav.)      | 171x127x50      | 670      | 1x840     |
| 6   | <b>151375</b> | Small Portion Tray | Black       | 140163/187026 (long) | 187x137x40      | 700      | 1x480     |
| 7   | <b>159111</b> | PP Lid for 151375  | Transparent | -                    | 190x138x14      | -        | 1x480     |
| 8   | <b>115491</b> | Small Portion Tray | White       | 140164*              | 188x119x54      | 760      | 1x480     |
| 9   | <b>198043</b> | Small Portion Tray | White       | 140249 (2 cav.)      | 171x127x50      | 670      | 1x840     |

\*No. 8 DF10/20 cassette, 140169 (2 cav.), also available





## PP/MINERAL DUNIFORM® PEARL

- Fits Duniform® machines DF15/25, DF32F to DF44\*
- Choice of lids or sealing films
- Personalisable sealing films
- Precise cut around edge when sealed

Material: PP/MIN -20°C to +120°C  
 Temp (Time): +120°C (1h), +70°C (4h), +40°C (10 days), -20°C (unlimited)



| No. | Article       | Description                      | Comp | Colour      | Cassette DF15/25** | Size ØxH (mm) | Vol (ml)    | Qty/Cart. |
|-----|---------------|----------------------------------|------|-------------|--------------------|---------------|-------------|-----------|
| 1   | <b>176398</b> | Pearl M1                         | 1    | Black       | 182654 (1 cav.)    | Ø220x42       | 990         | 1x320     |
| 2   | <b>176397</b> | Pearl M2                         | 2    | Black       | 182654 (1 cav.)    | Ø220x42       | 525/350     | 1x300     |
| 3   | <b>176396</b> | Pearl L1                         | 1    | Black       | 182653 (1 cav.)    | Ø250x42       | 1390        | 1x350     |
| 4   | <b>176395</b> | Pearl L2                         | 2    | Black       | 182653 (1 cav.)    | Ø250x42       | 750/490     | 1x300     |
| 5   | <b>176394</b> | Pearl L3                         | 3    | Black       | 182653 (1 cav.)    | Ø250x42       | 590/370/238 | 1x300     |
| 6   | <b>176399</b> | Lid for 176398/176397            | -    | Transparent | -                  | Ø257          | -           | 1x220     |
| 7   | <b>176400</b> | Lid for 176396/176395/<br>176394 | -    | Transparent | -                  | Ø289          | -           | 1x240     |

\*With figure cutting.

\*\*Only outer rim will be sealed.



## PP/MINERAL TAKE-AWAY TRAYS

Material: PP -20°C to +120°C

PP/MIN: -20°C to +120°C

Temp (Time): +120°C (1h), +70°C (4h), +40°C (10days), -20°C (unlimited)



| No. | Article       | Description          | Comp | Colour      | Cassette DF10/20* | Material | Size LxWxH (mm) | Vol (ml)           | Qty/Cart. |
|-----|---------------|----------------------|------|-------------|-------------------|----------|-----------------|--------------------|-----------|
| 1   | <b>161149</b> | Take-Away Tray       | 1    | Black       | 150020            | PP/MIN   | 250x159x43      | 1100               | 1x246     |
| 2   | <b>155054</b> | Take-Away Tray       | 1    | White       | 150020            | PP       | 250x159x43      | 1100               | 1x246     |
| 3   | <b>198429</b> | Take-Away Tray       | 1    | Transparent | 150020            | PP       | 250x159x43      | 1100               | 1x246     |
| 4   | <b>154063</b> | Take-Away Tray       | 1    | Black       | 150020            | PP       | 250x159x55      | 1400               | 1x228     |
| 5   | <b>154486</b> | Take-Away Tray       | 1    | White       | 150020            | PP       | 250x159x55      | 1400               | 1x228     |
| 6   | <b>154064</b> | Take-Away Tray       | 1    | Black       | 150020            | PP       | 250x159x70      | 1750               | 1x220     |
| 7   | <b>154487</b> | Take-Away Tray       | 1    | White       | 150020            | PP       | 250x159x70      | 1750               | 1x220     |
| 8   | <b>161150</b> | Take-Away Tray       | 2    | Black       | 150021            | PP/MIN   | 250x159x45      | 700/400            | 1x246     |
| 9   | <b>155055</b> | Take-Away Tray       | 2    | White       | 150021            | PP       | 250x159x45      | 700/400            | 1x246     |
| 10  | <b>198430</b> | Take-Away Tray       | 2    | Transparent | 150021            | PP       | 250x159x45      | 700/400            | 1x246     |
| 11  | <b>161151</b> | Take-Away Tray       | 3    | Black       | 150022            | PP/MIN   | 250x159x48      | 550/350/200        | 1x246     |
| 12  | <b>155056</b> | Take-Away Tray       | 3    | White       | 150022            | PP       | 250x159x48      | 550/350/200        | 1x246     |
| 13  | <b>198431</b> | Take-Away Tray       | 3    | Transparent | 150022            | PP       | 250x159x48      | 550/350/200        | 1x246     |
| 14  | <b>154755</b> | Take-Away Tray       | 5    | Black       | 155621            | PP       | 250x159x46      | 85/115/180/270/290 | 1x240     |
| 15  | <b>161164</b> | Small Take-Away Tray | 1    | Black       | 161171            | PP/MIN   | 215x148x41      | 900                | 1x336     |
| 16  | <b>161165</b> | Small Take-Away Tray | 2    | Black       | 161172            | PP/MIN   | 215x148x47      | 500/400            | 1x332     |

\*No. 1-7 DF15/DF25 cassette, 165911 (2 cav.) also available.

No. 8-10 DF15/DF25 cassette, 182975 (2 cav.) also available.

No. 11-13 DF15/DF25 cassette, 173050 (2 cav.) also available.

No. 15 DF15/DF25 cassette, 165913 (2 cav.) also available.

No. 16 DF15/25 cassette, 173051 (2 cav.) also available.



## APET LID FOR TAKE-AWAY TRAYS

Material: APET -40°C to +70°C

Temp (Time): +70°C (2h), +40°C (10days), -40°C (unlimited)

| No | Article       | Description             | Colour      | Size LxWxH (mm) | Qty/Cart. |
|----|---------------|-------------------------|-------------|-----------------|-----------|
| 1  | <b>155620</b> | Lid for Take-Away Trays | Transparent | 256x163x12      | 1x246     |



1



## PP HMR TRAYS

Material: PP -20°C to +120°C  
 Temp (Time): +120°C (1h), +100°C (2h), +70°C (2h),  
 +40°C (10days), -20°C (unlimited)



| No. | Article       | Description | Comp | Colour      | Cassette DF10/20* | Size (mm)<br>LxWxH | Vol<br>(ml) | Qty/<br>Cart. |
|-----|---------------|-------------|------|-------------|-------------------|--------------------|-------------|---------------|
| 1   | <b>171000</b> | HMR Tray    | 1    | Black       | 140156            | 215x148x40         | 840         | 1x328         |
| 2   | <b>171001</b> | HMR Tray    | 1    | White       | 140156            | 215x148x40         | 840         | 1x328         |
| 3   | <b>196520</b> | HMR Tray    | 1    | Transparent | 140156            | 215x148x40         | 840         | 1x328         |
| 4   | <b>171002</b> | HMR Tray    | 1    | Black       | 140156            | 215x148x50         | 1035        | 1x312         |
| 5   | <b>171003</b> | HMR Tray    | 1    | White       | 140156            | 215x148x50         | 1035        | 1x312         |
| 6   | <b>196519</b> | HMR Tray    | 1    | Transparent | 140156            | 215x148x50         | 1035        | 1x312         |
| 7   | <b>171004</b> | HMR Tray    | 1    | Black       | 140156            | 215x148x70         | 1395        | 1x232         |
| 8   | <b>199351</b> | HMR Tray    | 1    | Transparent | 140156            | 215x148x70         | 1395        | 1x232         |
| 9   | <b>171005</b> | HMR Tray    | 2    | Black       | 140155            | 215x148x50         | 540/400     | 1x312         |
| 10  | <b>171006</b> | HMR Tray    | 2    | White       | 140155            | 215x148x50         | 540/400     | 1x312         |
| 11  | <b>199349</b> | HMR Tray    | 2    | Transparent | 140155            | 215x148x50         | 540/400     | 1x312         |
| 12  | <b>208806</b> | HMR Tray    | 1    | Transparent | 140156            | 215x148x17         | 370         | 1x420         |

\* No. 1-8 DF15/DF25 cassette, 152415 (2 cav.), also available.

\* No. 9-11 DF15/25 cassette, 172698 (2 cav.), also available.



## APET LID FOR HMR TRAYS

Material: APET -40°C to +70°C  
 Temp (Time): +70°C (2h), +40°C (10days), -40°C (unlimited)



| No. | Article       | Description       | Colour      | Size LxWxH (mm) | Qty/Cart. |
|-----|---------------|-------------------|-------------|-----------------|-----------|
| 1   | <b>175050</b> | Lid for HMR Trays | Transparent | 221x154x14      | 1x312     |









# PP CATER LINE TRAYS

Material: PP -20°C to +120°C  
 Temp (Time): +120°C (1h), +100°C (2h), +70°C (4h),  
 +40°C (10days), -20°C (unlimited)



| No. | Article | Description     | Comp | Colour      | Cassette DF10/20* | Size (mm) LxWxH | Vol (ml)    | Qty/ Cart. |
|-----|---------|-----------------|------|-------------|-------------------|-----------------|-------------|------------|
| 1   | 162146  | Cater Line Tray | 1    | Black       | 140162            | 227x178x32      | 920         | 1x216      |
| 2   | 159179  | Cater Line Tray | 1    | White       | 140162            | 227x178x32      | 920         | 1x216      |
| 3   | 162150  | Cater Line Tray | 1    | Black       | 140162            | 227x178x40      | 1115        | 1x216      |
| 4   | 162153  | Cater Line Tray | 1    | White       | 140162            | 227x178x40      | 1115        | 1x216      |
| 5   | 199188  | Cater Line Tray | 1    | Transparent | 140162            | 227x178x40      | 1115        | 1x216      |
| 6   | 160063  | Cater Line Tray | 1    | Black       | 140162            | 227x178x50      | 1345        | 1x216      |
| 7   | 162343  | Cater Line Tray | 1    | White       | 140162            | 227x178x50      | 1345        | 1x216      |
| 8   | 162147  | Cater Line Tray | 2    | Black       | 159176            | 227x178x32      | 440/370     | 1x216      |
| 9   | 159180  | Cater Line Tray | 2    | White       | 159176            | 227x178x32      | 440/370     | 1x216      |
| 10  | 162151  | Cater Line Tray | 2    | Black       | 159176            | 227x178x40      | 550/480     | 1x216      |
| 11  | 162154  | Cater Line Tray | 2    | White       | 159176            | 227x178x40      | 550/480     | 1x216      |
| 12  | 199189  | Cater Line Tray | 2    | Transparent | 159176            | 227x178x40      | 550/480     | 1x216      |
| 13  | 160064  | Cater Line Tray | 2    | Black       | 159176            | 227x178x50      | 645/540     | 1x216      |
| 14  | 162344  | Cater Line Tray | 2    | White       | 159176            | 227x178x50      | 645/540     | 1x216      |
| 15  | 162303  | Cater Line Tray | 3    | Black       | 159177            | 227x178x32      | 350/225/170 | 1x216      |
| 16  | 159178  | Cater Line Tray | 3    | White       | 159177            | 227x178x32      | 350/225/170 | 1x216      |
| 17  | 162152  | Cater Line Tray | 3    | Black       | 159177            | 227x178x40      | 445/280/205 | 1x216      |
| 18  | 162155  | Cater Line Tray | 3    | White       | 159177            | 227x178x40      | 445/280/205 | 1x216      |
| 19  | 199191  | Cater Line Tray | 3    | Transparent | 159177            | 227x178x40      | 445/280/205 | 1x216      |
| 20  | 160065  | Cater Line Tray | 3    | Black       | 159177            | 227x178x50      | 530/325/235 | 1x216      |
| 21  | 162345  | Cater Line Tray | 3    | White       | 159177            | 227x178x50      | 530/325/235 | 1x216      |
| 22  | 210691  | Cater Line Tray | 1    | Transparent | 140162            | 227x178x18      | 500         | 1x216      |

\*No. 1-6 DF15/DF25 cassette, 153432 (2 cav.), also available  
 \*No. 7-12 DF15/DF25 cassette, 163449 (2 cav.), also available  
 \*No. 13-18 DF15/DF25 cassette, 163450 (2 cav.), also available



## APET LID FOR CATER LINE TRAYS

Material: APET -40°C to +70°C, PP -20°C to +120°C  
 Temp (Time): APET +70°C (2h), +40°C (10days), PP 120°C (1h),  
 +100°C (2h), +70°C (4h), +40°C (10days)



| No. | Article       | Description              | Material | Colour      | Size (mm)<br>LxWxH | Qty/<br>Cart. |
|-----|---------------|--------------------------|----------|-------------|--------------------|---------------|
| 1   | <b>171200</b> | Lid for Cater Line Trays | APET     | Transparent | 232x183x16         | 1x372         |
| 2   | <b>185994</b> | Lid for Cater Line Trays | PP       | Transparent | 240x190x20         | 1x126         |



1

2





## PP 1/4 GN MENU TRAYS

Material: PP -20°C to +120°C.

Temp (Time): +120°C <60min, +100°C <30min, +70°C <240min, +40°C <10days

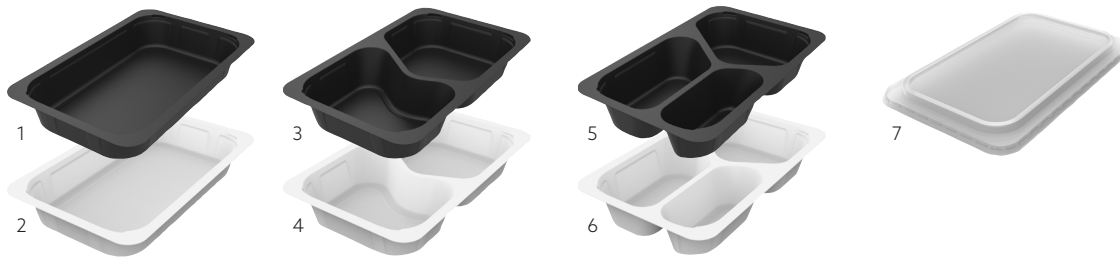


| No. | Article       | Description               | Comp | Colour      | Cassette DF10/20* | Size LxWxH (mm) | Vol (ml)     | Qty/Cart. |
|-----|---------------|---------------------------|------|-------------|-------------------|-----------------|--------------|-----------|
| 1   | <b>181900</b> | 1/4 GN Menu Tray          | 1    | Black       | 140149            | 263x161x40      | 1165         | 1x225     |
| 2   | <b>181901</b> | 1/4 GN Menu Tray          | 1    | White       | 140149            | 263x161x40      | 1165         | 1x225     |
| 3   | <b>181902</b> | 1/4 GN Menu Tray          | 2    | Black       | 140150            | 263x161x43      | 630/490      | 1x225     |
| 4   | <b>181903</b> | 1/4 GN Menu Tray          | 2    | White       | 140150            | 263x161x43      | 630/490      | 1x225     |
| 5   | <b>181904</b> | 1/4 GN Menu Tray          | 3    | Black       | 140151            | 263x161x45      | 5490/370/200 | 1x225     |
| 6   | <b>181905</b> | 1/4 GN Menu Tray          | 3    | White       | 140151            | 263x161x45      | 490/370/200  | 1x225     |
| 7   | <b>181906</b> | Lid for 1/4 GN Menu Trays | -    | Transparent | -                 | 272x173         | -            | 1x225     |

\*No. 1-2 DF15/25 cassette, 152407 (2 cav.), also available

\*No. 3-4 DF15/25 cassette, 152408 (2 cav.), also available

\*No. 5-6-DF15/25 cassette, 152406 (2 cav.), also available



## PP SIDE DISH TRAYS

Material: PP -20°C to +120°C

Temp (Time): +120°C (1h), +70°C (4h), +40°C (10days), -20°C (unlimited)



| No. | Article       | Description            | Comp | Colour      | Cassette DF10/20* | Size LxWxH (mm) | Vol (ml) | Qty/Cart. |
|-----|---------------|------------------------|------|-------------|-------------------|-----------------|----------|-----------|
| 1   | <b>758512</b> | Side Dish Tray         | 1    | Black       | 140152 (2 cav.)   | 138x114x35      | 350      | 1x300     |
| 2   | <b>758510</b> | Side Dish Tray         | 1    | White       | 140152 (2 cav.)   | 138x114x35      | 350      | 1x300     |
| 3   | <b>758516</b> | Side Dish Tray         | 1    | Transparent | 140152 (2 cav.)   | 138x114x35      | 350      | 1x300     |
| 4   | <b>758002</b> | Side Dish Tray         | 1    | Black       | 140152 (2 cav.)   | 138x114x53      | 470      | 1x300     |
| 5   | <b>758000</b> | Side Dish Tray         | 1    | White       | 140152 (2 cav.)   | 138x114x53      | 470      | 1x300     |
| 6   | <b>758006</b> | Side Dish Tray         | 1    | Transparent | 140152 (2 cav.)   | 138x114x53      | 470      | 1x300     |
| 7   | <b>758602</b> | Side Dish Tray         | 1    | Black       | 140152 (2 cav.)   | 138x114x70      | 630      | 1x276     |
| 8   | <b>758601</b> | Side Dish Tray         | 1    | White       | 140152 (2 cav.)   | 138x114x70      | 630      | 1x276     |
| 9   | <b>758606</b> | Side Dish Tray         | 1    | Transparent | 140152 (2 cav.)   | 138x114x70      | 630      | 1x276     |
| 10  | <b>757502</b> | Side Dish Tray         | 2    | Black       | 140153 (2 cav.)   | 138x114x53      | 220/140  | 1x480     |
| 11  | <b>757501</b> | Side Dish Tray         | 2    | White       | 140153 (2 cav.)   | 138x114x53      | 220/140  | 1x480     |
| 12  | <b>757506</b> | Side Dish Tray         | 2    | Transparent | 140153 (2 cav.)   | 138x114x53      | 220/140  | 1x480     |
| 13  | <b>182376</b> | Lid for side dish tray | -    | Transparent | -                 | 140x122         | -        | 1x900     |

\* No. 1-9 DF15/DF25 cassette, 152411 (4 cav.), also available.



## PP/MINERAL BOWLS

- Handles to prevent burned hands

Material: PP/MIN -20°C to +120°C

PP: -20°C to +120°C

Temp (Time): +120°C (1h), +70°C (4h), +40°C (10days), -20°C (unlimited)



| No. | Article       | Description   | Colour      | Material | Cassette DF10/20* | Size(mm) LxWxH | Vol (ml) | Qty/ Cart. |
|-----|---------------|---------------|-------------|----------|-------------------|----------------|----------|------------|
| 1   | <b>177907</b> | Bowl          | Black       | PP/MIN   | 148354            | 153x153x45     | 350      | 1x480      |
| 2   | <b>177908</b> | Bowl          | Black       | PP/MIN   | 148354            | 153x153x60     | 500      | 1x480      |
| 3   | <b>205981</b> | Bowl          | Transparent | PP       | 148354            | 153x153x60     | 500      | 1x480      |
| 4   | <b>177909</b> | Bowl          | Black       | PP/MIN   | 148354            | 153x153x70     | 650      | 1x480      |
| 5   | <b>177910</b> | Lid for bowls | Transparent | PP       | -                 | 159x159x22     | -        | 1x480      |

\*DF15/DF25 cassette, 168939 (2 cav.), also available



## APET BAGUETTE TRAY

Material: APET -40°C to +70°C

Temp (Time): +70°C (2h), +40°C (10days), -40°C (unlimited)



| No. | Article       | Description   | Comp | Colour      | Cassette DF10/20* | Size (mm) LxWxH | Vol (ml) | Qty/ Cart. |
|-----|---------------|---------------|------|-------------|-------------------|-----------------|----------|------------|
| 1   | <b>112060</b> | Baguette Tray | 1    | Transparent | 140157            | 260x110x68      | 1150     | 5x70       |

\*DF15/DF25 cassette, 152414 (3 cav.), also available





## PP 1/6 & 1/4 GN TRAYS

Material: PP -20°C to +120°C  
 Temp (Time): +120°C (1h), +100°C (2h), +70°C (2h),  
 +40°C (10days), -20°C (unlimited)



| No. | Article       | Description | Colour      | Cassette DF15/25*                  | Size LxWxH (mm) | Vol (ml) | Qty/Cart. |
|-----|---------------|-------------|-------------|------------------------------------|-----------------|----------|-----------|
| 1   | <b>171807</b> | 1/6 GN Tray | Black       | 171941 (2 cav.)                    | 176x162x60      | 1000     | 1x318     |
| 2   | <b>171808</b> | 1/6 GN Tray | Black       | 171941 (2 cav.)                    | 176x162x100     | 1600     | 1x300     |
| 3   | <b>152345</b> | 1/4 GN Tray | Black       | DF15 168940 / DF25 147611 (2 cav.) | 265x161x60      | 1650     | 1x200     |
| 4   | <b>152344</b> | 1/4 GN Tray | White       | DF15 168940 / DF25 147611 (2 cav.) | 265x161x60      | 1650     | 1x200     |
| 5   | <b>115580</b> | 1/4 GN Tray | Black       | DF15 168940 / DF25 147611 (2 cav.) | 265x161x80      | 2000     | 1x200     |
| 6   | <b>207729</b> | 1/4 GN Tray | Transparent | DF15 168940 / DF25 147611 (2 cav.) | 265x161x80      | 2000     | 1x200     |
| 7   | <b>117100</b> | 1/4 GN Tray | Black       | DF15 168940 / DF25 147611 (2 cav.) | 265x161x100     | 2600     | 1x192     |
| 8   | <b>740102</b> | 1/4 GN Tray | Black       | 152407 (2 cav.)                    | 265x162x50      | 1500     | 1x200     |
| 9   | <b>740100</b> | 1/4 GN Tray | White       | 152407 (2 cav.)                    | 265x162x50      | 1500     | 1x200     |
| 10  | <b>740202</b> | 1/4 GN Tray | Black       | 152407 (2 cav.)                    | 265x162x70      | 2000     | 1x150     |
| 11  | <b>740200</b> | 1/4 GN Tray | White       | 152407 (2 cav.)                    | 265x162x70      | 2000     | 1x150     |

\* No. 1 DF10/20 cassette, 171940, also available  
 No. 2 DF10 cassette, 171940, also available  
 No. 3-4 DF10/20 cassette, 147609, also available  
 No. 5-7 DF10 cassette, 147609, also available  
 No. 8-11 DF10/20 cassette, 140149, also available

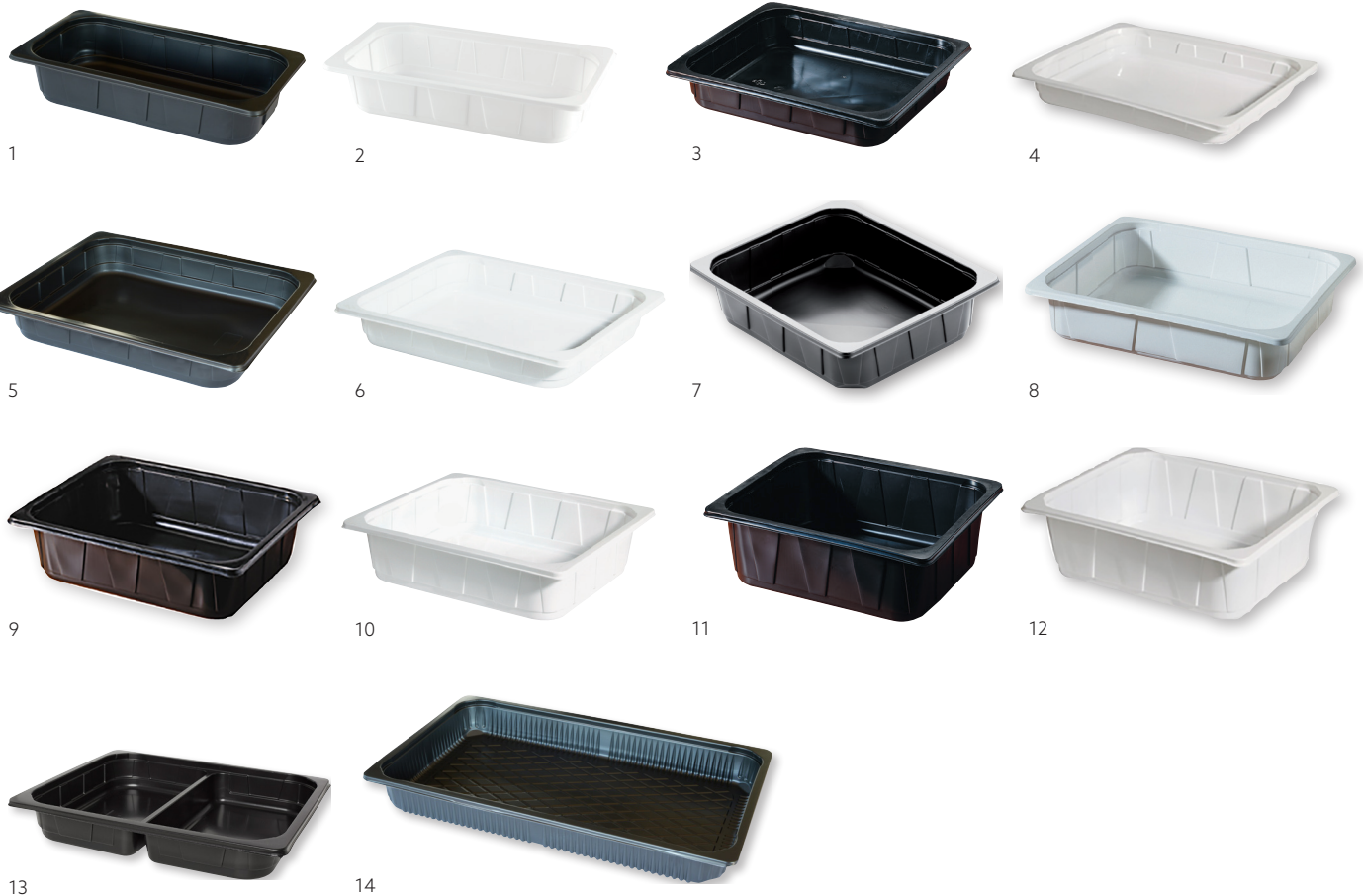


## PP 1/1, 1/2 & 1/3 GN TRAYS

Material: PP -20°C to +120°C  
 PP/MIN -20°C to +120°C  
 Temp (Time): +120°C (1h), +70°C (2h), +40°C (10days), -20°C (unlimited)



| No. | Article       | Description | Comp | Colour | Cassette DF15/25 | Material | Size LxWxH (mm) | Vol (ml) | Qty/Cart. |
|-----|---------------|-------------|------|--------|------------------|----------|-----------------|----------|-----------|
| 1   | <b>166879</b> | 1/3 GN Tray | 1    | Black  | 150023           | PP       | 325x176x65      | 2500     | 1x144     |
| 2   | <b>142529</b> | 1/3 GN Tray | 1    | White  | 150023           | PP       | 325x176x65      | 2500     | 1x144     |
| 3   | <b>133726</b> | 1/2 GN Tray | 1    | Black  | 141550           | PP       | 325x265x40      | 2700     | 1x100     |
| 4   | <b>114040</b> | 1/2 GN Tray | 1    | White  | 141550           | PP       | 325x265x40      | 2700     | 1x100     |
| 5   | <b>168629</b> | 1/2 GN Tray | 1    | Black  | 141550           | PP       | 325x265x50      | 3400     | 1x100     |
| 6   | <b>114050</b> | 1/2 GN Tray | 1    | White  | 141550           | PP       | 325x265x50      | 3400     | 1x100     |
| 7   | <b>161152</b> | 1/2 GN Tray | 1    | Black  | 141550           | PP/MIN   | 325x265x60      | 4000     | 1x100     |
| 8   | <b>114060</b> | 1/2 GN Tray | 1    | White  | 141550           | PP       | 325x265x60      | 4000     | 1x100     |
| 9   | <b>115543</b> | 1/2 GN Tray | 1    | Black  | 141550           | PP       | 325x265x80      | 5000     | 1x96      |
| 10  | <b>114080</b> | 1/2 GN Tray | 1    | White  | 141550           | PP       | 325x265x80      | 5000     | 1x96      |
| 11  | <b>115544</b> | 1/2 GN Tray | 1    | Black  | 141550           | PP       | 325x265x100     | 6300     | 1x92      |
| 12  | <b>114100</b> | 1/2 GN Tray | 1    | White  | 141550           | PP       | 325x265x100     | 6300     | 1x92      |
| 13  | <b>171654</b> | 1/2 GN Tray | 2    | Black  | 141550           | PP       | 325x265x50      | 2x1600   | 1x100     |
| 14  | <b>166027</b> | 1/1 GN Tray | 1    | Black  | Not sealable     | PP       | 530x325x60      | 8175     | 1x48      |









## APET LIDS FOR 1/1 & 1/2 GN TRAYS

Material: APET -40°C to +70°C

Temp (Time): +70°C (2h), +40°C (10days), -40°C (unlimited)

| No. | Article       | Description          | Colour      | Size (mm)<br>LxWxH | Qty/<br>Cart. |
|-----|---------------|----------------------|-------------|--------------------|---------------|
| 1   | <b>160801</b> | Lid for 1/2 GN Trays | Transparent | 325x266            | 1x60          |
| 2   | <b>166026</b> | Lid for 1/1 GN Tray  | Transparent | 530x325            | 1x32          |



1



2

## CPET (RECYCLED) 1/3 & 1/2 GN TRAYS

Material: CPET -40°C to +220°C

Temp (Time): +220°C (2h), +40°C (10days), -40°C (unlimited)



| No. | Article        | Description | Colour | Cassette DF15/25 | Size LxWxH (mm) | Vol (ml) | Qty/Cart. |
|-----|----------------|-------------|--------|------------------|-----------------|----------|-----------|
| 1   | <b>171806*</b> | 1/3 GN Tray | Black  | 187025           | 325x176x60      | 2400     | 1x174     |
| 2   | <b>115511</b>  | 1/2 GN Tray | Black  | 141550           | 325x265x50      | 3350     | 1x90      |
| 3   | <b>159586*</b> | 1/2 GN Tray | White  | 141550           | 325x265x50      | 3350     | 1x116     |
| 4   | <b>176602*</b> | 1/2 GN Tray | White  | 141550           | 325x265x60      | 3900     | 1x124     |
| 5   | <b>204029*</b> | 1/2 GN Tray | Green  | 141550           | 325x265x60      | 3900     | 1x124     |
| 6   | <b>131280*</b> | 1/2 GN Tray | Black  | 141550           | 325x265x79      | 5100     | 1x80      |
| 7   | <b>103726*</b> | 1/2 GN Tray | White  | 141550           | 325x265x79      | 5100     | 1x80      |

\* 100% recycled material



1



2



3



4



5



6



7



# FILMS THAT PROMOTE YOUR BUSINESS

If you want to make your food look delicious, encourage impulse purchases and ensure a leak-free, secure fit, Duniform® films tick the boxes. You can choose between Biobased, PP, PET and Universal films. These are crystal-clear and can be specified to prevent fogging. Even better, we can personalise them for your business - making your packaging a powerful promotional tool.



**"In today's globalised world, there is a growing demand for individualisation. Customising films offers a simple, cost-effective way to meet this need - and build your brand. Our customisation team can organise this for you."**

## SEALING FILM FOR MENU FIBRE TRAYS



| No | Article | Cooking temp. max °C | Sealing temp. | DF 10 | DF 20 | DF 15/25 | DF 22 | DF 32 | DF 36 | DF 44 | DF 46 | Thickness (µm) | Size (mm x m) | Qty/ Cart. |
|----|---------|----------------------|---------------|-------|-------|----------|-------|-------|-------|-------|-------|----------------|---------------|------------|
| 1  | 196585  | 220 (60min)          | 110-140°C     | •     | •     | •        | •     | -     | -     | -     | -     | 30             | 185x400       | 1          |
| 2  | 196586  | 220 (60min)          | 110-140°C     | -     | -     | •        | -     | •     | -     | -     | -     | 30             | 272x400       | 1          |

## SEALING FILM FOR PP TRAYS



| No. | Article | Cooking temp. max °C | Sealing temp. | DF 10 | DF 20 | DF 15/25 | DF 22 | DF 32 | DF 36 | DF 44 | DF 46 | Thickness µm | Size mm x m | Roll Ø mm | Qty/ Cart. |
|-----|---------|----------------------|---------------|-------|-------|----------|-------|-------|-------|-------|-------|--------------|-------------|-----------|------------|
| 1   | 147974  | 100 (30min)          | 150 - 180°C   | •     | •     | •        | •     | -     | -     | -     | -     | 60           | 154x250     | 174       | 1          |
| 2   | 147975  | 100 (30min)          | 150 - 180°C   | •     | •     | •        | •     | -     | -     | -     | -     | 60           | 172x250     | 174       | 1          |
| 3   | 147910  | 100 (30min)          | 150 - 180°C   | •     | •     | •        | •     | -     | -     | -     | -     | 60           | 185x250     | 174       | 1          |
| 4   | 108078  | 100 (30min)          | 150 - 180°C   | -     | -     | •*       | •     | •     | -     | -     | -     | 60           | 230x500     | 227       | 1          |
| 5   | 107074  | 100 (30min)          | 150 - 180°C   | -     | -     | •*       | -     | •     | -     | -     | -     | 60           | 272x500     | 227       | 1          |
| 6   | 107075  | 100 (30min)          | 150 - 180°C   | -     | -     | -        | -     | •     | •     | •     | •     | 60           | 340x500     | 227       | 1          |
| 7   | 107073  | 100 (30min)          | 150 - 180°C   | -     | -     | -        | -     | •     | •     | •     | •     | 60           | 380x500     | 227       | 1          |
| 8   | 191010  | 100 (30min)          | 150 - 180°C   | -     | -     | -        | -     | •     | •     | •     | •     | 60           | 390x500     | 227       | 1          |
| 9   | 151548  | 100 (30min)          | 150 - 180°C   | -     | -     | -        | -     | -     | -     | •     | •     | 60           | 415x500     | 227       | 1          |
| 10  | 182539  | 100 (30min)          | 150 - 180°C   | -     | -     | -        | -     | -     | -     | •     | •     | 60           | 430x250     | 227       | 1          |

\* Only with spike roll

## SEALING FILM FOR PET TRAYS



| No. | Article | Cooking temp. max °C | Sealing temp. | DF 10 | DF 20 | DF 15/25 | DF 22 | DF 32 | DF 36 | DF 44 | DF 46 | Thickness µm | Size mm x m | Roll Ø mm | Qty/ Cart. |
|-----|---------|----------------------|---------------|-------|-------|----------|-------|-------|-------|-------|-------|--------------|-------------|-----------|------------|
| 1   | 162792  | 210 (30min)          | 160 - 250°C   | •     | •     | •        | •     | -     | -     | -     | -     | 40           | 115x400     | 175       | 1          |
| 2   | 162800  | 210 (30min)          | 160 - 250°C   | •     | •     | •        | •     | -     | -     | -     | -     | 40           | 185x400     | 175       | 1          |
| 3   | 162801  | 210 (30min)          | 160 - 250°C   | -     | -     | •        | •     | •     | -     | -     | -     | 40           | 240x400     | 175       | 1          |
| 4   | 162802  | 210 (30min)          | 160 - 250°C   | -     | -     | •        | -     | •     | -     | -     | -     | 40           | 272x400     | 175       | 1          |
| 5   | 162804  | 210 (30min)          | 160 - 250°C   | -     | -     | -        | -     | •     | •     | •     | •     | 40           | 340x400     | 175       | 1          |
| 6   | 162805  | 210 (30min)          | 160 - 250°C   | -     | -     | -        | -     | •     | •     | •     | •     | 40           | 380x400     | 175       | 1          |
| 7   | 162806  | 210 (30min)          | 160 - 250°C   | -     | -     | -        | -     | •     | •     | •     | •     | 40           | 390x400     | 175       | 1          |
| 8   | 162807  | 210 (30min)          | 160 - 250°C   | -     | -     | -        | -     | -     | -     | •     | •     | 40           | 410x400     | 175       | 1          |
| 9   | 198390  | 210 (30min)          | 160 - 250°C   | -     | -     | -        | -     | -     | -     | •     | •     | 40           | 415x400     | 175       | 1          |
| 10  | 162808  | 210 (30min)          | 160 - 250°C   | -     | -     | -        | -     | -     | -     | •     | •     | 40           | 446x400     | 175       | 1          |

## UNIVERSAL SEALING FILM FOR PP/PET TRAYS



| No. | Article | Cooking temp. max °C | Sealing temp. | DF 10 | DF 20 | DF 15/25 | DF 22 | DF 32 | DF 36 | DF 44 | DF 46 | Thickness µm | Size mm x m | Roll Ø mm | Qty/ Cart. |
|-----|---------|----------------------|---------------|-------|-------|----------|-------|-------|-------|-------|-------|--------------|-------------|-----------|------------|
| 1   | 159847  | 180 (30min)          | 140 - 210°C   | •     | •     | •        | -     | -     | -     | -     | -     | 42           | 154x400     | 177       | 1          |
| 2   | 174553  | 180 (30min)          | 140 - 210°C   | •     | •     | •        | •     | -     | -     | -     | -     | 42           | 172x400     | 177       | 1          |
| 3   | 159848  | 180 (30min)          | 140 - 210°C   | •     | •     | •        | •     | -     | -     | -     | -     | 42           | 185x400     | 177       | 1          |
| 4   | 159849  | 180 (30min)          | 140 - 210°C   | -     | -     | •        | •     | •     | -     | -     | -     | 42           | 230x400     | 177       | 1          |
| 5   | 159850  | 180 (30min)          | 140 - 210°C   | -     | -     | •        | -     | •     | -     | -     | -     | 42           | 272x400     | 177       | 1          |
| 6   | 159851  | 180 (30min)          | 140 - 210°C   | -     | -     | -        | -     | •     | •     | •     | •     | 42           | 340x400     | 177       | 1          |
| 7   | 159843  | 180 (30min)          | 140 - 210°C   | -     | -     | -        | -     | •     | •     | •     | •     | 42           | 380x400     | 177       | 1          |
| 8   | 159844  | 180 (30min)          | 140 - 210°C   | -     | -     | -        | -     | •     | •     | •     | •     | 42           | 390x400     | 177       | 1          |
| 9   | 159845  | 180 (30min)          | 140 - 210°C   | -     | -     | -        | -     | -     | -     | •     | •     | 42           | 415x400     | 177       | 1          |
| 10  | 159846  | 180 (30min)          | 140 - 210°C   | -     | -     | -        | -     | -     | -     | •     | •     | 42           | 445x400     | 177       | 1          |



DF22/DF22F



DF25



DF20



DF15



DF10



DF5



## A MACHINE FOR EVERY NEED

Our in-house team can help you choose the optimal Dunifform® machine for your company. While each machine suits different businesses – from small delis to industrial-scale HMR firms – they are all designed with simplicity in mind. Whatever model you choose, the cassettes can be changed in moments.



### FOR GLASSES

Serve sealed BioPak RPET glasses with speed and style.

DF32/DF32F



DF36



DF44



DF46



**MANUAL**

Simply lift and close the lid to seal your filled tray.



**SEMI-AUTOMATIC**

Simply push in the cassette to seal your filled tray.



**FULLY-AUTOMATIC**

The machine winds the trays, and is capable of large volumes.



# OVERVIEW OF ALL OUR MACHINES



| General Information                                 | DF5                 | DF10                                  | DF15                                  | DF20                             | DF25                             | DF22                     | DF22F                   |
|---|---------------------|---------------------------------------|---------------------------------------|----------------------------------|----------------------------------|--------------------------|-------------------------|
| Article number                                      | 700076              | 700080                                | 163140                                | 700095                           | 700090                           | 163141                   | 164795                  |
| Machine weight                                      | 22 kg               | 13 kg                                 | 25 kg                                 | 20 kg                            | 43 kg                            | 30 kg                    | 30 kg                   |
| Cassette weight                                     | 0,5 kg              | 0,5 kg                                | 2,5 kg                                | 0,5 kg                           | 2,5 kg                           | 1,0 kg                   | 1,0 kg                  |
| Electrical data                                     | 220 V~, AC 50/60 Hz | 230 V~, AC 50 Hz 10 A                 | 230 V~, AC 50 Hz 10 A                 | 230 V~, AC 50 Hz 10 A            | 230 V~, AC 50 Hz 10 A            | 230 V~, AC 50 Hz 10 A    | 230 V~, AC 50 Hz 10 A   |
| Maximum power consumption                           | 0,4 kW              | 0,7 kW                                | 1,0 kW                                | 0,75 kW                          | 1 kW                             | 0,8 kW                   | 1,0 kW                  |
| Lengths of cable/ connection plug                   | 2m/1-phase grounded | 2,5 m / 1-phase grounded              | 2,5 m / 1-phase grounded              | 2,5 m / 1-phase grounded         | 2 - 3 m/1-phase grounded         | 2,0 m / 1-phase grounded | 2,0 m /1-phase grounded |
| Pressing force                                      |                     | 930 N                                 | 930 N                                 | 1003 N                           | 1003 N                           | 1400 N                   | 1400 N                  |
| Capacity  | 6-10 cycles/min     | 8 cycles/min                          | 8 cycles/min                          | 10 cycles/min                    | 10 cycles/min                    | 2 - 4 cycles/min         | 2 - 4 cycles/min        |
| Start-up heating time                               | 5-10 min            | 15 min                                | 20 min                                | 15 min                           | 20 min                           | 10 min                   | 10 min                  |
| Dimensions  | DF5                 | DF10                                  | DF15                                  | DF20                             | DF25                             | DF22                     | DF22F                   |
| Length  | 350 mm base         | 640 mm (with handle)<br>540 mm (base) | 830 mm (with handle)<br>740 mm (base) | 615 mm                           | 760 mm                           | 550 mm                   | 550 mm                  |
| Width   | 360 mm              | 240 mm                                | 355 mm                                | 220 mm                           | 355 mm                           | 325 mm                   | 325 mm                  |
| Height  | 610 mm              | 260 mm (closed)<br>500 mm (open)      | 270 mm (closed)<br>660 mm (open)      | 220 mm (closed)<br>520 mm (open) | 350 mm (closed)<br>650 mm (open) | 450 mm                   | 450 mm                  |
| Trays/Film/Sealing                                  | DF5                 | DF10                                  | DF15                                  | DF20                             | DF25                             | DF22                     | DF22F                   |
| Maximum sealable dimension (length x width x depth) | Ø 98 mm             | 265x175x100 mm (>¼ GN)                | 325x265x100 mm (½ GN)                 | 265x175x70 mm (>¼ GN)            | 325x265x100 mm (½ GN)            | 230x280x100 mm (>¼ GN)   | 230x280x100 mm (>¼ GN)  |
| Maximum film width                                  | 130 mm              | 185 mm                                | 272 mm                                | 185 mm                           | 272 mm                           | 240 mm                   | 240 mm                  |
| Sealing temperature                                 | max 200°C           | max 210°C                             | max 210°C                             | max 190°C                        | max 180°C                        | max 210°C                | max 210°C               |
| Sealing technique                                   | Semi-automatic      | Manual                                | Manual                                | Semi-automatic                   | Semi-automatic                   | Semi-automatic           | Semi-automatic          |
| MAP - Modified Atmosphere Packaging                 | -                   | -                                     | -                                     | -                                | -                                | -                        | -                       |
| Vacuum chambers                                     | -                   | -                                     | -                                     | -                                | -                                | -                        | -                       |
| Figure cutting                                      | Yes                 | -                                     | -                                     | -                                | -                                | -                        | Yes                     |



| DF32                   | DF32F                  | DF36                          | DF44                          | DF46                          |
|------------------------|------------------------|-------------------------------|-------------------------------|-------------------------------|
| 160900                 | 159788                 | 191000                        | 160901                        | 163142                        |
| approx. 40 kg          | approx. 40 kg          | approx. 100 kg                | approx. 190 kg                | approx. 550 kg                |
| approx. 1,5 – 2,5 kg   | approx. 3 – 4 kg       | approx. 3 – 4 kg              | approx. 4 – 6 kg              | approx. 3 – 5 kg              |
| 230 V~, AC 50/60 Hz    | 230 V~, AC 50/60 Hz    | 230 V~, AC 50/60 Hz           | 400 V~, AC 50/60 Hz           | 400 V~, AC 50/60 Hz           |
| 1,8 kW                 | 1,8 kW                 | 2,5 kW                        | 4,3 kW                        | 6,3 kW                        |
| 2 m / 1-phase grounded | 2 m / 1-phase grounded | 1,5 m / 1-phase grounded      | - / 3-phase grounded          | - / 3-phase grounded          |
| 2000 N                 | 2000 N                 | 2000 N                        | 7000 N                        | -                             |
| 2 – 4 cycles/min       | 2 – 4 cycles/min       | 2 with MAP, 2 – 6 without MAP | 3 with MAP, 2 – 6 without MAP | 2-6 with MAP, 5-9 without MAP |
| 10 min                 | 10 min                 | 10 min                        | 20 min                        | 10 min                        |
| DF32                   | DF32F                  | DF36                          | DF44                          | DF46                          |
| 550 mm                 | 550 mm                 | 650 mm                        | 970 mm                        | 3050 mm                       |
| 475 mm                 | 475 mm                 | 530 mm                        | 675 mm                        | 905 mm                        |
| 450 mm                 | 450 mm                 | 625 mm                        | 1570 mm                       | 1640 mm                       |
| DF32                   | DF32F                  | DF36                          | DF44                          | DF46                          |
| 380x280x100 mm (>½ GN) | 370x275x100 mm (>½ GN) | 360x270x100 mm (>½ GN)        | 430x315x95 mm (>½ GN)         | 360x270x100 mm (>½ GN)        |
| 390 mm                 | 390 mm                 | 390 mm                        | 470 mm                        | 446 mm                        |
| max 200°C              | max 200°C              | max 200°C                     | max 200°C                     | max 200°C                     |
| Semi-automatic         | Semi-automatic         | Semi-automatic                | Semi-automatic                | Automatic                     |
| -                      | -                      | Yes                           | Yes                           | Yes                           |
| -                      | -                      | 1                             | 1                             | 1                             |
| -                      | Yes                    | Yes                           | Yes                           | Yes                           |



# DUNIFORM® DF5 SEALING MACHINE CONCEPT

Health is wealth. No wonder that today's consumers are opting for nutritious, hygienically-served food and drinks: smoothies, freshly squeezed juices, protein shakes and healthy snacks are extremely popular. At the same time, customers everywhere are actively seeking solutions that are healthy for the future of the planet. The new Duniform® DF5 concept lets you deliver the best of both worlds - while optimising hygiene, minimising waste and working with effortless efficiency.



**"Hygienically sealing in freshness and avoiding spills is good for customers and business."**



compostable



## SWEET CUP

Material: BAGASSE/PLA: up to +100°C  
PLA max +40°C

| No. | Article       | Description | Colour  | Material | Volume (ml) | Qty./Cart. | DF5 Cassette |
|-----|---------------|-------------|---------|----------|-------------|------------|--------------|
| 1   | <b>208851</b> | Sweet Cup   | Printed | Bagasse  | 360         | 18x50      | 191377       |
| 2   | <b>208852</b> | Sweet Cup   | Printed | Bagasse  | 480         | 25x36      | 191377       |
| 3   | <b>192157</b> | Breeze Cup  | Printed | Bagasse  | 350         | 18x50      | 191377       |
| 4   | <b>192158</b> | Breeze Cup  | Printed | Bagasse  | 470         | 25x36      | 191377       |
| 5   | <b>192159</b> | Breeze Cup  | Printed | Bagasse  | 590         | 25x36      | 191377       |



## RPET CRYSTAL GLASSES

Material: RPET 70°C



| No | Article       | Description  | Material | Colour      | Volume (ml) | Size | Pcs/SKU | DF5 Cassette |
|----|---------------|--|----------|-------------|-------------|------|---------|--------------|
| 1  | <b>188001</b> | Crystal Glass  | RPET     | Transparent | 270         | -    | 16x60   | 191380       |
| 2  | <b>188002</b> | Crystal Glass  | RPET     | Transparent | 360         | -    | 16x60   | 191380       |
| 3  | <b>188004</b> | RPET Crystal Glass                                     | RPET     | Transparent | 410 (0,3l)  | -    | 16x50   | 191378       |
| 4  | <b>188005</b> | RPET Crystal Glass                                     | RPET     | Transparent | 470 (0,4l)  | -    | 16x50   | 191378       |
| 5  | <b>188006</b> | RPET Crystal Glass                                     | RPET     | Transparent | 590 (0,5l)  | -    | 16x50   | 191378       |
| 6  | <b>188003</b> | Crystal Glass Insert to be sealed with 188004 - 188006 | RPET     | Transparent | 120         | -    | 16x30   | 191377       |
| 7  | <b>177998</b> | RPET Flat Lid (w/o hole)                               | RPET     | Transparent | -           | -    | 20x50   | -            |
| 8  | <b>188012</b> | RPET Dome Lid (w hole)                                 | RPET     | Transparent | -           | -    | 20x50   | -            |



## DELIPACK

Material: PP max +100°C (microwarmable)



| No. | Article        | Description    | Size (mm) LxWxH | Vol (ml) | Qty/ Cart. | DF5 Cassette |
|-----|----------------|----------------|-----------------|----------|------------|--------------|
| 1   | <b>156421*</b> | Delipack Round | 101x101x30      | 125      | 20x50      | 191382       |
| 2   | <b>156422*</b> | Delipack Round | 101x101x37      | 200      | 20x50      | 191382       |
| 3   | <b>156423*</b> | Delipack Round | 101x101x48      | 250      | 20x50      | 191382       |
| 4   | <b>156424*</b> | Delipack Round | 101x101x61      | 300      | 20x50      | 191382       |



\*Remove film before reheating in microwave



# DUNIFORM® DF5 - DF46 SEALING MACHINES

Duni offers a variety of machines in its Duniform® Sealing Concept. Whatever your requirements or budget, we are certain you will find the right sealing solution for your operation.





## DF5

- Small & compact
- Easy and fast

| General Information                |                     |
|------------------------------------|---------------------|
| Article number                     | 700076              |
| Machine weight                     | 22 kg               |
| Cassette weight                    | 0,5 kg              |
| Electrical data                    | 220 V~, AC 50/60 Hz |
| Maximum power consumption          | 0,4 kW              |
| Lengths of cable / connection plug | 2m/1-phase grounded |
| Pressing force                     |                     |
| Capacity                           | 6-10 cycles/min     |
| Start-up heating time              | 5-10 min            |
| Trays/Film/Sealing                 |                     |
| Maximum sealable glass dimension   | Ø 98 mm             |
| Maximum film width                 | 130 mm              |
| Sealing temperature                | max 200°C           |
| Sealing technique                  | Semi-automatic      |
| Sealing film                       | 188059              |

## DF5 CASSETTES & FILM

| No | Article | Description                        | Colour      | Size (mm) | Qty./Cart. |
|----|---------|------------------------------------|-------------|-----------|------------|
| 1  | 191378  | Cassette DF5 1-Cav                 | Black       | Ø 92      | 1x1        |
| 2  | 191377  | Cassette DF5 1-Cav                 | Red         | Ø 85      | 1x1        |
| 3  | 191380  | Cassette DF5 1-Cav                 | Blue        | Ø 88      | 1x1        |
| 4  | 191381  | Cassette DF5 1-Cav                 | Silver      | Ø 90      | 1x1        |
| 5  | 191382  | Cassette DF5 1-Cav                 | Green       | Ø 96      | 1x1        |
| 6  | 188059  | Sealing Film, 42 µ, 130 mm x 400 m | Transparent |           | 1x1        |



1

2

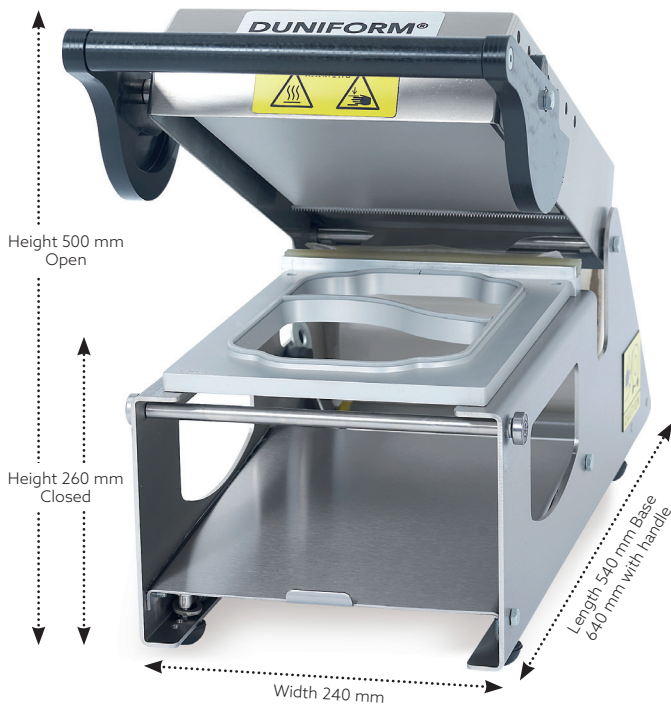
3

4

5

6





## DF10

- Small & compact
- Easy and fast

| General Information                |                            |
|------------------------------------|----------------------------|
| Article number                     | 700080                     |
| Machine weight                     | 13 kg                      |
| Cassette weight                    | 0,5 kg                     |
| Electrical data                    | 230 V~, AC 50 Hz 10 A      |
| Maximum power consumption          | 0,7 kW                     |
| Lengths of cable / connection plug | 2,5 m / 1-phase grounded   |
| Pressing force                     | 930 N                      |
| Capacity                           | 8 cycles/min               |
| Start-up heating time              | 15 min                     |
| Trays/Film/Sealing                 |                            |
| Maximum sealable tray dimension    | 265 x 175 x 100 mm (>¼ GN) |
| Maximum film width                 | 185 mm                     |
| Sealing temperature                | max 210°C                  |
| Sealing technique                  | Manual                     |
| Accessories                        |                            |
| Spike Roll DF10                    | 155198                     |

## DF15

- Seals sizes up to 1/2 GN
- Easy & fast

| General Information                |                           |
|------------------------------------|---------------------------|
| Article number                     | 163140                    |
| Machine weight                     | 25 kg                     |
| Cassette weight                    | 2,5 kg                    |
| Electrical data                    | 230 V~, AC 50 Hz 10 A     |
| Maximum power consumption          | 1,0 kW                    |
| Lengths of cable / connection plug | 2,5 m / 1-phase grounded  |
| Pressing force                     | 930 N                     |
| Capacity                           | 8 cycles/min              |
| Start-up heating time              | 20 min                    |
| Trays/Film/Sealing                 |                           |
| Maximum sealable tray dimension    | 325 x 265 x 100 mm (½ GN) |
| Maximum film width                 | 272 mm                    |
| Sealing temperature                | max 210°C                 |
| Sealing technique                  | Manual                    |
| Accessories                        |                           |
| Adapter for DF20/10 Cassettes      | 141549                    |
| Spike Roll DF15                    | 166799                    |







DUNIFORM®







## DF20

- Semi-automatic
- Light and robust
- Digital display

| General Information                |                           |
|------------------------------------|---------------------------|
| Article number                     | 700095                    |
| Machine weight                     | 20 kg                     |
| Cassette weight                    | 0,5 kg                    |
| Electrical data                    | 230 V~, AC 50 Hz 10 A     |
| Maximum power consumption          | 0,75 kW                   |
| Lengths of cable / connection plug | 2,5 m / 1-phase grounded  |
| Pressing force                     | 1003 N                    |
| Capacity                           | 10 cycles/min             |
| Start-up heating time              | 15 min                    |
| Trays/Film/Sealing                 |                           |
| Maximum sealable tray dimension    | 265 x 175 x 70 mm (>¼ GN) |
| Maximum film width                 | 185 mm                    |
| Sealing temperature                | max 190°C                 |
| Sealing technique                  | Semi-automatic            |
| Accessories                        |                           |
| Cassette Rack DF20                 | 102014                    |
| Spike Roll DF20                    | 102903                    |

## DF25

- Seals sizes up to 1/2 GN
- Robust
- Semi-automatic

| General Information                |                           |
|------------------------------------|---------------------------|
| Article number                     | 700090                    |
| Machine weight                     | 43 kg                     |
| Cassette weight                    | 2,5 kg                    |
| Electrical data                    | 230 V~, AC 50 Hz 10 A     |
| Maximum power consumption          | 1,0 kW                    |
| Lengths of cable / connection plug | 2-3 m / 1-phase grounded  |
| Pressing force                     | 1003 N                    |
| Capacity                           | 10 cycles/min             |
| Start-up heating time              | 20 min                    |
| Trays/Film/Sealing                 |                           |
| Maximum sealable tray dimension    | 325 x 265 x 100 mm (½ GN) |
| Maximum film width                 | 272 mm                    |
| Sealing temperature                | max 190°C                 |
| Sealing technique                  | Semi-automatic            |
| Accessories                        |                           |
| Adapter for DF20/10 Cassettes      | 141549                    |
| Spike Roll DF25                    | 108824                    |
| Trolley                            | 887100                    |





## DF22/22F

- Small & compact
- Semi-automatic
- Figure cutting available

| General Information                |                            |
|------------------------------------|----------------------------|
| Article number                     | 163141/164795              |
| Machine weight                     | 30 kg                      |
| Cassette weight                    | 1,0 kg                     |
| Electrical data                    | 230 V~, AC 50 Hz 10 A      |
| Maximum power consumption          | 0,8 kW                     |
| Lengths of cable / connection plug | 2,0 m / 1-phase grounded   |
| Pressing force                     | 1400 N                     |
| Capacity                           | 2-4 cycles/min             |
| Start-up heating time              | 10 min                     |
| Trays/Film/Sealing                 |                            |
| Maximum sealable tray dimension    | 230 x 280 x 100 mm (>¼ GN) |
| Maximum film width                 | 240 mm                     |
| Sealing temperature                | max 210°C                  |
| Sealing technique                  | Semi-automatic             |
| Figure cutting                     | Yes (164795)               |
| Accessories                        |                            |
| Spike Roll DF22/22F                | 168744                     |
| Trolley                            | 887100                     |
| Trolley                            | 161965                     |

## DF32/32F

- Seals sizes larger than 1/2 GN
- Small & compact
- Figure cutting available

| General Information                |                            |
|------------------------------------|----------------------------|
| Article number                     | 160900/159788              |
| Machine weight                     | approx. 40 kg              |
| Cassette weight                    | 2-3 kg                     |
| Electrical data                    | 1/N/PE 230 V~, AC 50/60 Hz |
| Maximum power consumption          | 1,8 kW                     |
| Lengths of cable / connection plug | 2 m / 1-phase grounded     |
| Pressing force                     | 2000 N                     |
| Capacity                           | 2-3 cycles/min             |
| Start-up heating time              | 10 min                     |
| Trays/Film/Sealing                 |                            |
| Maximum sealable tray dimension    | 380 x 280 x 100 mm (>½ GN) |
| Maximum film width                 | 390 mm                     |
| Sealing temperature                | max 200°C                  |
| Sealing technique                  | Semi-automatic             |
| Figure cutting                     | Yes (159788)               |
| Accessories                        |                            |
| Spike Roll DF32/32F                | 164020                     |
| Trolley                            | 887120                     |
| Trolley                            | 161965                     |







## DF36

- Compact & robust
- Figure cutting
- Programmable cycles
- MAP

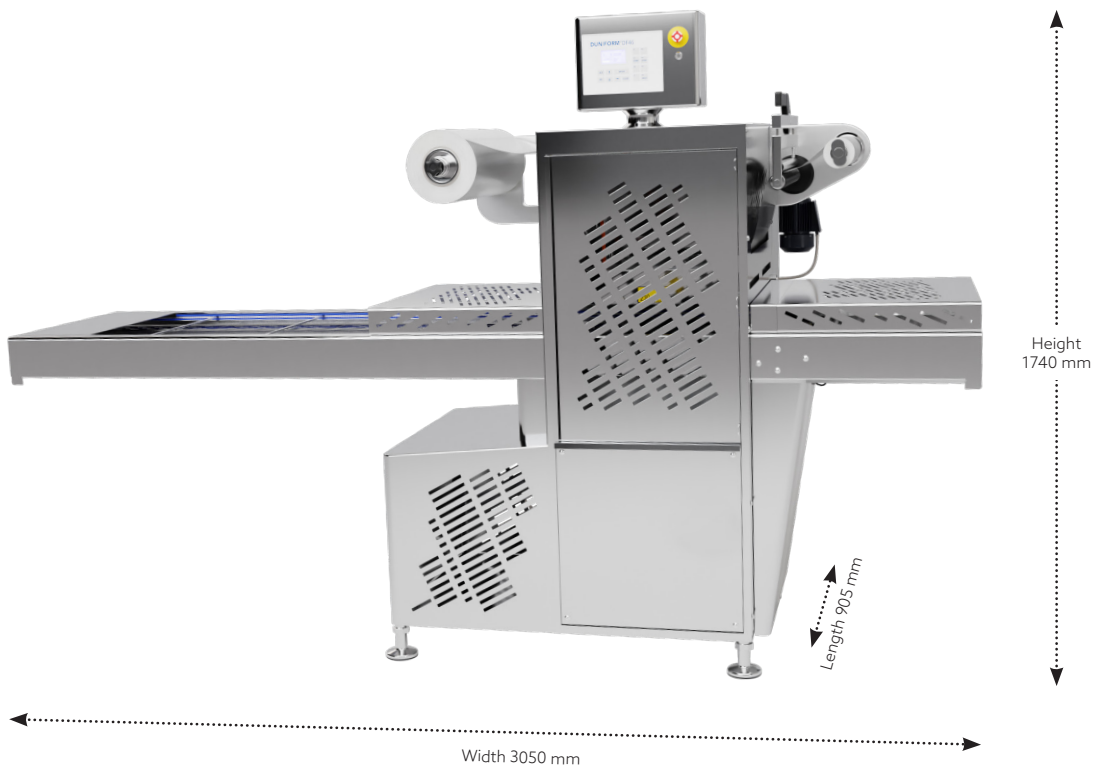
| General Information                |                               |
|------------------------------------|-------------------------------|
| Article number                     | 191000                        |
| Machine weight                     | approx. 100 kg                |
| Cassette weight                    | 3- 4 kg                       |
| Electrical data                    | 1/N/PE 230 V~, AC - 50/60 Hz  |
| Maximum power consumption          | 2,5 kW                        |
| Lengths of cable / connection plug | 1,5 m / 1-phased grounded     |
| Pressing force                     | 2000 N                        |
| Capacity                           | 2 with MAP, 2 - 6 without MAP |
| Start-up heating time              | 10 min                        |
| Trays/Film/Sealing                 |                               |
| Maximum sealable tray dimension    | 360 x 270 x 100 mm (>½ GN)    |
| Maximum film width                 | 390 mm                        |
| Sealing temperature                | max 200°C                     |
| Sealing technique                  | Semi-automatic                |
| Vacuum chambers                    | 1                             |
| Figure cutting                     | Yes                           |
| Accessories                        |                               |
| Spike Roll DF36                    | 168744                        |
| Vacuum Pump 20m³/h                 | 166472                        |
| Trolley                            | 887100                        |
| Trolley                            | 161965                        |



## DF44

- MAP
- Robust
- Automatic film winding
- Figure cutting

| General Information                 |                               |
|-------------------------------------|-------------------------------|
| Article number                      | 160901                        |
| Machine weight                      | approx. 190 kg                |
| Cassette weight                     | 4-6 kg                        |
| Electrical data                     | 3/N/PE 400 V~, AC - 50/60 Hz  |
| Maximum power consumption           | 4,3 kW                        |
| Lengths of cable / connection plug  | - / 3-phase                   |
| Pressing force                      | 7000 N                        |
| Capacity                            | 3 with MAP, 2 - 6 without MAP |
| Start-up heating time               | 20 min                        |
| Trays/Film/Sealing                  |                               |
| Maximum sealable tray dimension     | 430 x 315 x 95 mm (>½ GN)     |
| Maximum film width                  | 470 mm                        |
| Sealing temperature                 | max 200°C                     |
| Sealing technique                   | Semi-automatic                |
| MAP - Modified Atmosphere Packaging | Yes                           |
| Vacuum chambers                     | 1                             |
| Figure cutting                      | Yes                           |
| Accessories                         |                               |
| Spike Roll DF44                     | 164020                        |
| Compressor                          | 152556                        |
| High Oxygene Vacuum Pump 40 m³/h    | 166473                        |
| High Oxygene Vacuum Pump 60 m³/h    | 166474                        |
| Food Filter DF44                    | 168631                        |



## DF46

- Fully automatic
- MAP
- Film winding
- Figure cutting

| General Information                 |                                   |
|-------------------------------------|-----------------------------------|
| Article number                      | 163142                            |
| Machine weight                      | approx. 550 kg                    |
| Cassette weight                     | 3 - 5 kg                          |
| Electrical data                     | 400 V~, AC- 50/60 Hz              |
| Maximum power consumption           | 6,3 kW                            |
| Lengths of cable / connection plug  | - / 3-phase grounded              |
| Pressing force                      | -                                 |
| Capacity                            | 2-6 with MAP,<br>5- 9 without MAP |
| Start-up heating time               | 10 min                            |
| Trays/Film/Sealing                  |                                   |
| Maximum sealable tray dimension     | 360 x 270 x 100 mm (>½ GN)        |
| Maximum film width                  | 446 mm                            |
| Sealing temperature                 | max 200°C                         |
| Sealing technique                   | Automatic                         |
| MAP - Modified Atmosphere Packaging | Yes                               |
| Vacuum chambers                     | 1                                 |
| Figure cutting                      | Yes                               |
| Accessories                         |                                   |
| Spike Roll DF46                     | 167331                            |
| High Oxygen Vacuum Pump<br>40 m³/h  | 166473                            |
| Food Filter DF46                    | 168632                            |
| Tray Rails (for two cavities)       | 164723                            |



## THERMO BAGS

- Maintains food temperature
- Can be loaded from the side or from the top
- Can be connected on top of each other with buckles



| No. | Article       | Description | Comp | Benefits            | Buckles | Size (mm)<br>LxWxH | Qty/<br>Cart. |
|-----|---------------|-------------|------|---------------------|---------|--------------------|---------------|
| 1   | <b>163086</b> | Thermo Bag  | 1    | 2 ¼ GN Tray         | Yes     | 290x200x100        | 5x1           |
| 2   | <b>163085</b> | Thermo Bag  | 1    | Economy 5 ¼ GN Tray | No      | 275x200x240        | 5x1           |
| 3   | <b>163087</b> | Thermo Bag  | 1    | 5 ¼ GN Tray         | Yes     | 275x200x240        | 5x1           |
| 4   | <b>163088</b> | Thermo Bag  | 1    | Medium              | No      | 310x240x260        | 5x1           |
| 5   | <b>163089</b> | Thermo Bag  | 1    | Large               | No      | 420x200x260        | 5x1           |



## TEMPERATURE CONTROL EQUIPMENT

- For improved temperature control
- Fits into thermo bag lids

| No | Article       | Description        | Colour | Material  | Size LxWxH (mm) | Pack |
|----|---------------|--------------------|--------|-----------|-----------------|------|
| 1  | <b>149403</b> | Cooling Plate ¼ GN | White  | Aluminium | 164x265x15      | 5x1  |



## THERMO BOXES

- Maintains food temperature
- Washable for easy cleaning



| No. | Article       | Comp | Description | Material | Benefits       | Size (mm)<br>LxWxH | Qty/<br>Cart. |
|-----|---------------|------|-------------|----------|----------------|--------------------|---------------|
| 1   | <b>185160</b> | 1    | Thermo Box  | EPP      | Single Portion | 110x230x325        | 6x1           |
| 2   | <b>161169</b> | 1    | Thermo Box  | EPP      | 1/4 GN         | 660x400x300        | 1x1           |
| 3   | <b>161170</b> | 1    | Thermo Box  | EPP      | 1/2 GN         | 450x330x300        | 1x1           |
| 4   | <b>113500</b> | 3    | Thermo Box  | EPP      | Single Portion | 400x325x110        | 6x1           |
| 5   | <b>751500</b> | 3    | Thermo Box  | EPP      | Single Portion | 455x320x105        | 5x1           |
| 6   | <b>164669</b> | 1    | Thermo Box  | EPP      | Single Portion | 325x255x327        | 1x1           |



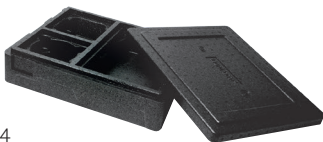
1



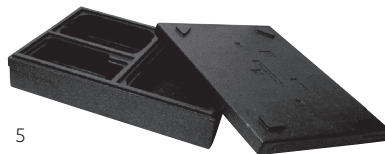
2



3



4



5



6

## TROLLEYS

| No. | Article       | Description   | Size LxWxH (mm) | Qty/Cart. |
|-----|---------------|---------------|-----------------|-----------|
| 1   | <b>887100</b> | Trolley Stand | 900x650x670     | 1x1       |
| 2   | <b>161965</b> | Trolley       | 600x600x800     | 1x1       |



1



2



**DUNIFORM®**



## **FOOD'S BEST FRIEND**

Call us food's best friend if you like. Because everything we do, we do for food. Everything we do, we do to deliver better food experiences. Welcome to better food experiences by Duniform!